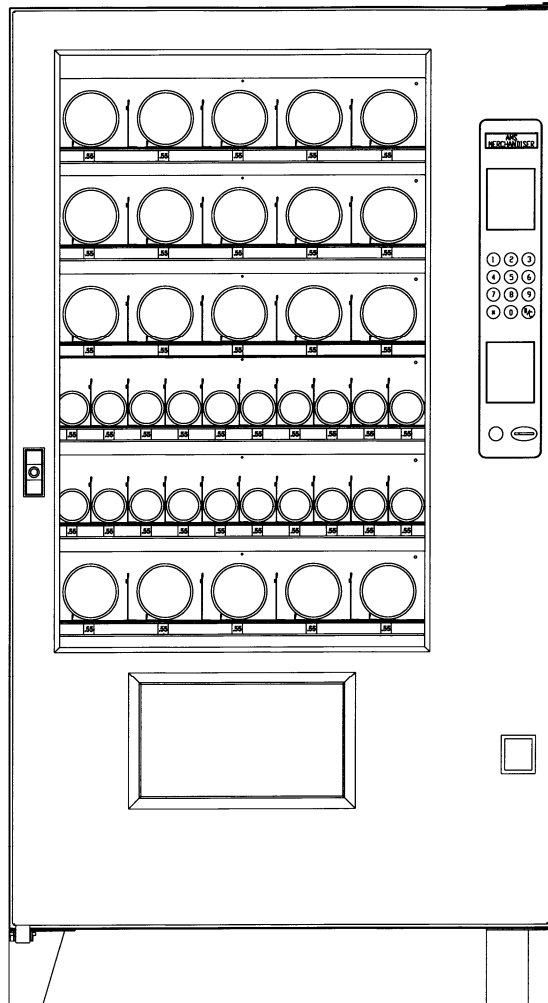




TM



MODEL 39" SNACK

GLASS FRONT MERCHANDISER ILLUSTRATED PARTS MANUAL

LO119 REV. B

AUTOMATED MERCHANDISING SYSTEMS INC.
255 WEST BURR BLVD.
KEARNEYSVILLE, WV 25430
304-725-6921 - Fax 304-725-6983

info@amsvendors.com
www.amsvendors.com

INTERNATIONAL A.M.S. S DE RL DE CV
KM. 9 CARR. AL CASTILLO NO. 8200
MPIO. DE EL SALTO, JAL. MEXICO 45680
5233-3-6-88-07-17 - Fax 5233-3-6-88-13-14

www.amsint.com.mx
servicio@amsint.com.mx

AMS Model 39" Snack Glass Front Merchandiser Illustrated Parts Manual
Table of Contents

<u>SECTION</u>	<u>PAGE</u>
INTRODUCTION	
Table of Contents	3
General Introduction	4
Manual Organization	4
Merchandiser Identification	5
Numbering System for Merchandisers	5
Patent Disclosure	6
Publication Notice	7
CABINET	
Cabinet Covers and Screens	8
Cabinet Left Side and Center View	10
Cabinet Right Side View	12
CHILLER OPTION	
Chiller Parts – Angled View	14
Chiller Parts – Top View	16
Chiller Option - Ventilated Cabinet	18
DOOR	
Door, Coin Bay	20
Door, External Parts	24
Door, Hinges, Glass and Fluorescent Lamps	26
Door, Optional Lamps	30
Door, Sensor System and Hopper	32
Door, Trim and Finish Parts	36
POS Display	40
ELECTRICAL HARNESSSES	42
HELIXES AND TRAYS	
Helixes	60
1.5" Helix Tray	62
Bottle Trays	64
Universal (Snack/Candy) Trays	66

GENERAL INTRODUCTION

The purpose of this manual is to give our customers a way of identifying major service parts for repair and replacement. The illustrations and parts list in this manual are for identification only. Some optional parts are also shown.

Illustrations of these major parts are keyed with our part numbers. The illustrations help identify the general design, position and orientation of these parts. The note section may also give important information.

Please refer to the section on merchandiser identification on the following pages. Without the model style and serial number it may be difficult to identify the required part.

Parts should be ordered from your distributor.

It is our intent to assist our customers with up-to-date documentation. However, this manual may not show all parts, variations or changes. Some parts may be shown out of scale. This manual is itself subject to change without notice. If any errors are found, please notify AMS so the correction can be included in later revisions. Engineering data and third party information are generally not included. The graphical data, group assembly data, parts, part assembly, parts breakout information and tabular data conveyed by this manual is proprietary and belongs to AMS, and holders without prior consent of or without knowledge of and by AMS must surrender this data immediately.

All measurements are in inches except where specified as Metric.

MANUAL ORGANIZATION

This manual is divided into general sections. Each section is further divided into the various subsections or subassemblies. These lead off with one or more illustrations showing the parts and each part is identified with a number. Note that some part numbers are for assemblies fabricated as a unit at AMS and are replaceable only as a unit. Also, other part numbers identify optional parts which may or may not have been contracted for and factory installed by AMS.

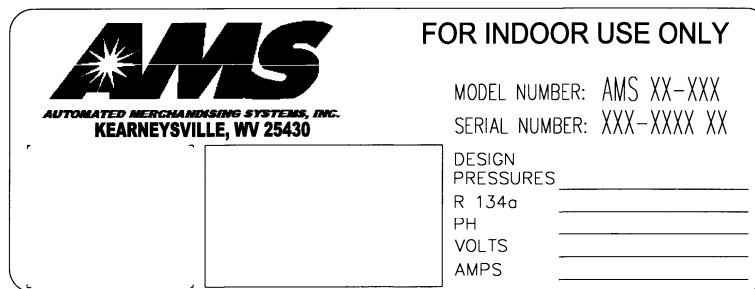
The number in the illustration is listed with the description or title for that part. In some instances there may be multiple parts to choose from. The correct service or repair part for the style of merchandiser must be selected. A quantities column in the list indicates quantities required.

There is a note section where additional information may be found.

This manual contains additional and new information for a vendor as currently manufactured. Previous manuals should be kept with older vendors.

MERCHANDISER IDENTIFICATION

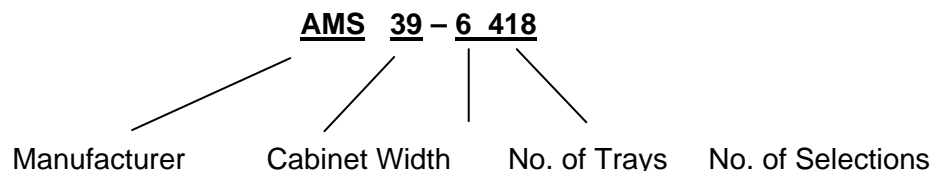
When requesting service, replacement parts or technical assistance, please use the **Model Number** and the **Serial Number**, found on the Serial Plate (Refer to Figure 1) affixed to the merchandiser. The plate is usually located inside the window. The information contained on this plate is necessary to determine what parts, kits, or maintenance apply to your vendor.



72-002 Serial Plate

Figure 1. Example of Serial Plate

Example of Model Number Breakdown

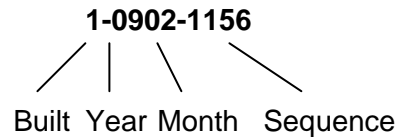


Example: AMS35-6-418 means this vendor is an Automated Merchandising Systems merchandiser, **39"** wide, with six (**6**) trays making available four hundred eighteen (**418**) positions for different products.

NUMBERING SYSTEM FOR MERCHANDISERS

Starting January 1, 2009, a new merchandiser numbering system went into effect as follows:

Example of Serial Numbering System



The first digit identifies where a merchandiser was manufactured. Those merchandisers built in the U.S. start with the number **1**. Those merchandisers built in Mexico start with the number **2**.

The next two digits identify the year of manufacture. These numbers are **09** (for 2009) and so forth.

The next two digits identify the month. The first month of the year is **01** and the last month is **12**.

The last four digits identify the number assigned to each merchandiser during assembly. Numbering starts with **0000** and continues through **9999**, whereupon these four digits start over at **0000**.

An example of the numbering system in use is as follows:

1-0902-1156

This merchandiser was manufactured at the Kearneysville, W.V. plant in 2009, in February, and was the 1156th merchandiser manufactured.

PATENT DISCLOSURE

This merchandiser and/or certain of its components are covered by one or more of the following U.S. and international patents;

U.S. PATENTS: 6,041,962; 6,145,699; 6,202,888; 6,384,402; 6,520,373; 6,708,079; 6,794,634; 7,191,915;
7,343,220, 7,446,302; 7,742,837

CANADIAN PATENT: 2,329,314.

MEXICO PATENT: 230714.

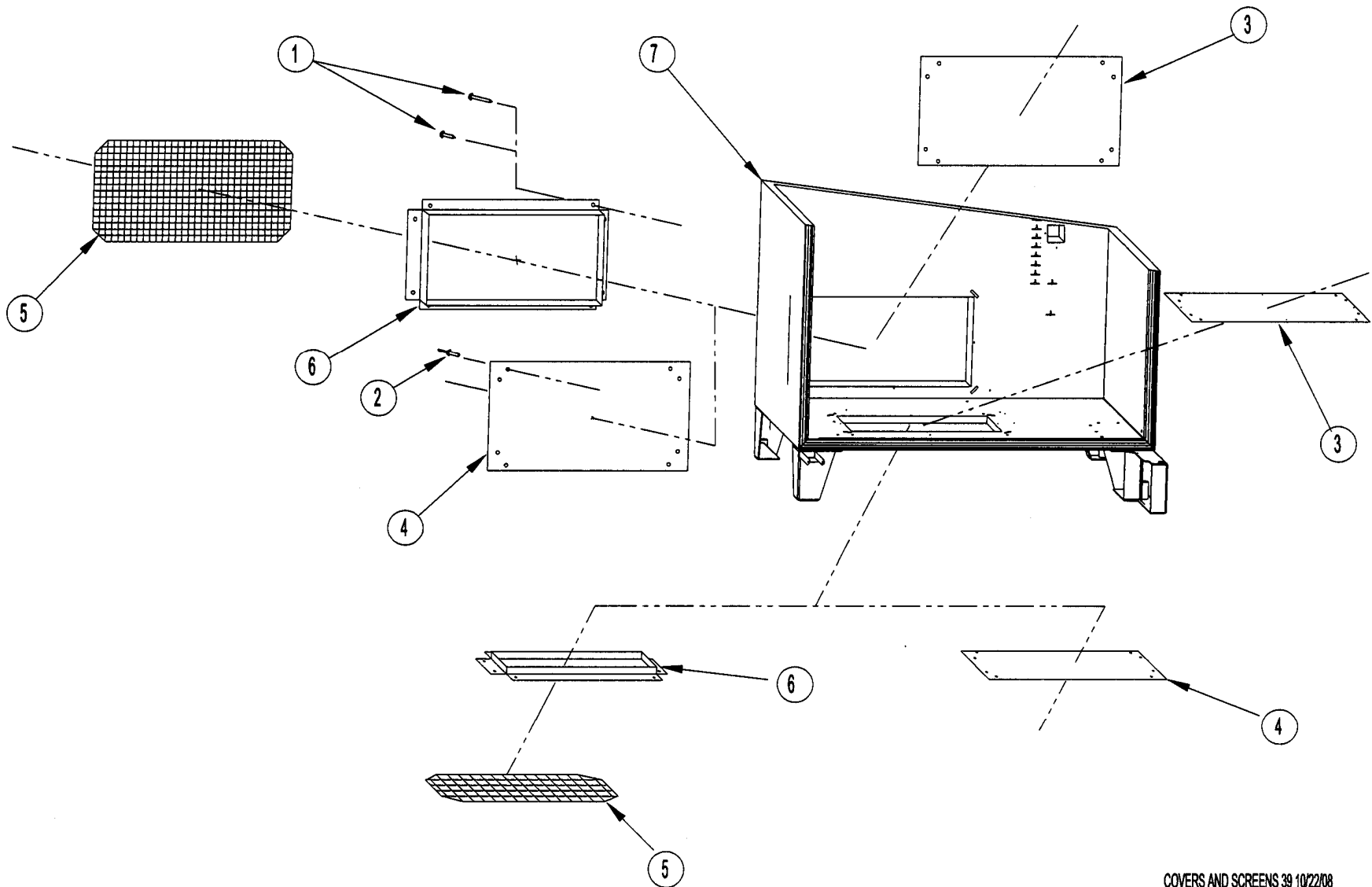
PUBLICATION NOTICE

L0119, Revision B, ECN 2436, 07/30/10

Please note this manual for the 39" Snack Merchandiser was split away from L0072D, Glass Front Merchandiser Illustrated Parts Manual, Models 35" (Snack), and 39" (Snack). L0072 is now the IPM for the 35" Snack Merchandiser.

It is our intent to assist our customers with up-to-date information: however, this manual may not contain all updates and is subject to revision without notice. Please contact our Service Department with your requests or comments.

CABINET COVERS AND SCREENS ILLUSTRATION

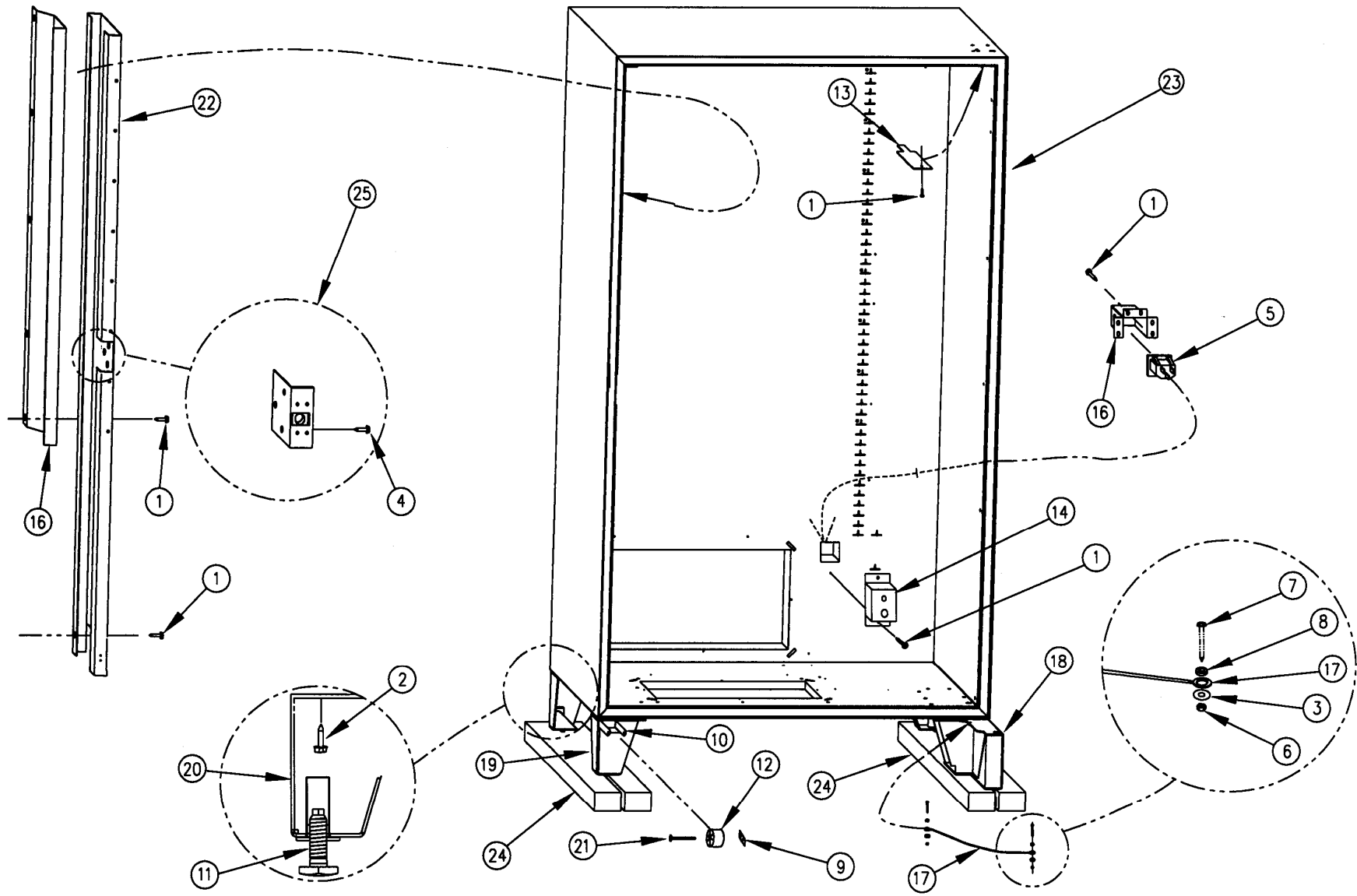


CABINET COVERS AND SCREENS PARTS LIST

ITEM	PART NO.	PART DESCRIPTION	QTY	NOTES
1	3000	Screw, Sheet Metal, TEK 8-18 (1/2" Long)	8	Quantities For One Trim
	3000-06	Screw, Sheet Metal, TEK 8-18 (3/4" Long)	8	Quantities For Trim When Option 21308 is Installed
2	3009-02	Rivet, Pop, Steel, 1/8" (1/4" Long)	8	Quantities For One Cover
3	20185	Tank, Rear Chiller Hole Cover	1	Also Used for Tank Bottom Cover
4	20187	Wrapper Rear Chiller Hole Cover 39" Black	1	Also Used for Wrapper Bottom Cover
	20187-01	Wrapper Rear Chiller Hole Cover 39" Coca Cola Red		
	20187-02	Wrapper Rear Chiller Hole Cover 39" Bimbo Blue		
5	21040	Screen, Rear Chiller Hole, 8 Mesh	1	With H&S - 1/8 x 1/8 Welded Galvanized. Also Used for Bottom Hole.
	20279	Screen, Rear Chiller Hole		4 Mesh, Galvanized: -90 4 Mesh, Stainless. Also Used for Bottom Hole.
	20600	Screen, Rear Insect (39")		18x16 Mesh, .011, Aluminum. Also Used for Bottom Hole
	21308	Screen, Expanded Metal, Rear Chiller Hole (39")		For Mexico. Use in Addition With Other Rear Screens.
6	20275	Trim, Rear Chiller Hole 39"	1	Steel Trim Holds Screens. Also Used for Bottom Hole
7	22071	Assy., Cabinet, Ver. 4, 39"	1	Contact AMS for your application.

General Note: The rear opening and the bottom opening are the same size on 39" Cabinet. All screen materials are fitted into trim parts, and trim parts are attached to the outside of the cabinet. The combination of screens used may differ between merchandisers. Covers to seal the cabinet are always attached inside and outside the cabinet at the same time, and without using the trim.

CABINET LEFT SIDE AND CENTER ILLUSTRATION

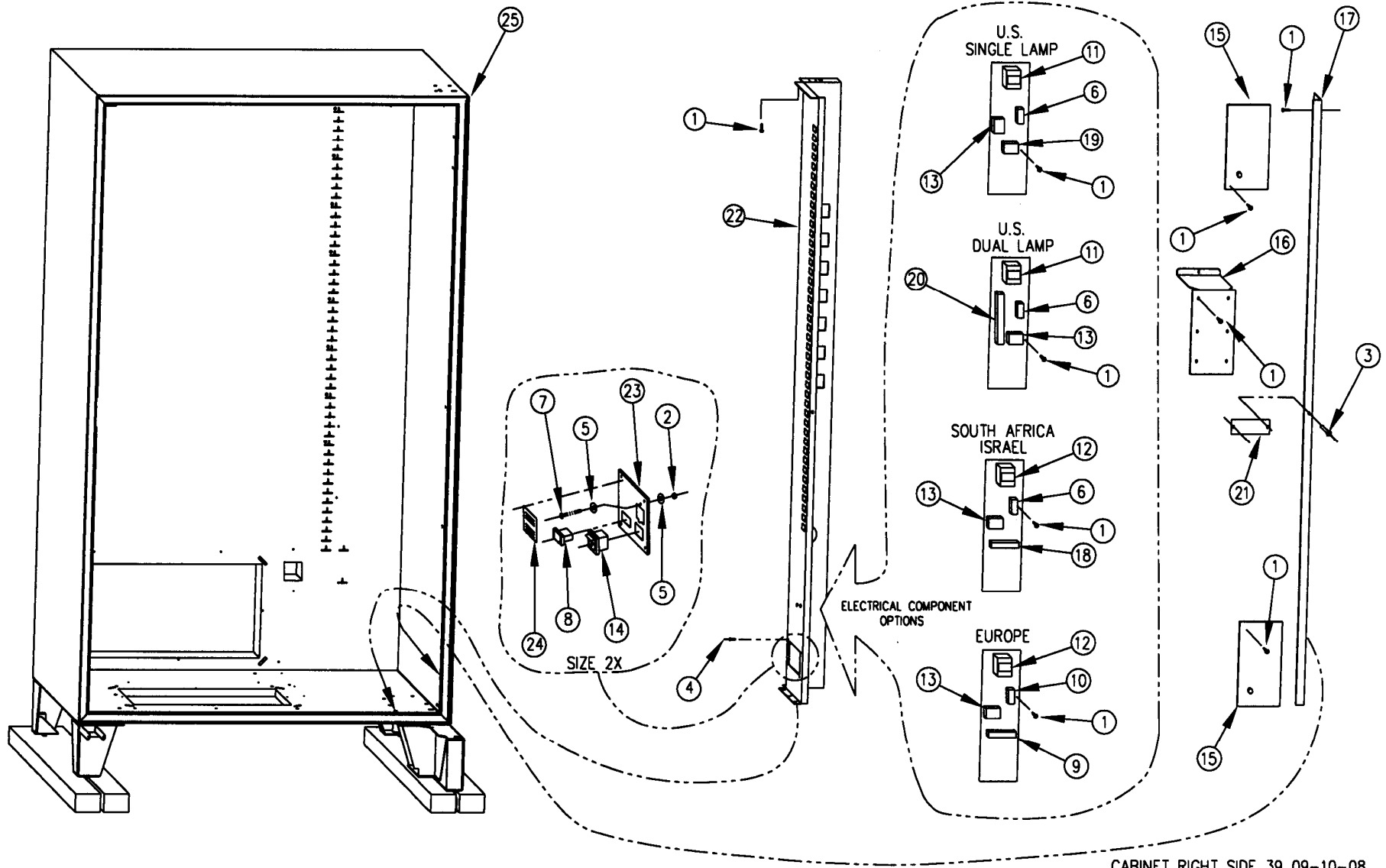


CABINET LEFT AND CENTER 39 9-9-08

CABINET LEFT SIDE AND CENTER PARTS LIST

INDEX NO.	PART NO.	PART NAME	QTY	NOTES
1	3000	Sheet Metal Screw TEK #8-18	54	
2	3007-06	Screw, 5/16-18, Type F	16	4 Per Leg
3	3017-10	Washer, #10 SAE Flat	2	For Door Stop Cable (2 Places)
4	3018	Sheet Metal Screw, 1/4"	3	For Lock Assembly
5	3057	Inlet, Panel Mount, IEC	1	Snapped Into Place at Rear of Cabinet
6	3060-10	Nut, 10-32, W/Nylon Insert	2	For Door Stop Cable (2 Places)
7	3061-06	Screw, 10-32 x 3/4 Phillips Pan Head	2	For Door Stop Cable (2 Places)
8	3067	Spacer, .192 ID x .125 Length x 3/8 Dia.	2	For Door Stop Cable (2 Places)
9	3113	Push Nut, 3/16" Stud	1	
10	20019	Leg, Roller Bracket	1	
11	20121	Leveling Leg	5	Cabinet To Be Leveled Using All Legs
12	20177	Roller, Molded (Nylon)	1	
13	20291	Cover Plate, Hinge Hole, Ver. 2	1	For Top Hinge
14	20321	Cover, IEC Inlet	1	For Shielding
15	20481	Extension, Left Vertical Rail Mount	1	
16	20608	Cover, Power Cord	1	For Power Cord Attachment to Vendor
17	21079	Cable Assembly, Door Stop, Modified	1	
18	21122	Assembly, Leg, Front Hinge With Thread Cover	1	
19	21123	Assembly, Leg, Left Front with Thread Covers	1	
20	21124	Assembly Leg, Rear with Thread Covers	2	
21	21250	Shaft, Headed Roller (Zinc Plated)	1	
22	21689	Rail Mount, Left Vertical VER 2 (3")	1	
23	22071	Assembly, Cabinet, Ver 4 (39")	1	For Reference. Contact AMS for your application.
24	23231	Shipping Board	2	40" Long, Not Treated, Left or Right Side
	23231-02	Shipping Board		38-3/8" Long, Not Treated, Left or Right Side
	23231-01	Shipping Board		40" Long, Treated (ISPM 15), Left or Right Side
	23231-03	Shipping Board		38-3/8" Long, Treated (ISPM 15), Left or Right Side
25	23305	Assembly, Low Temp/Snack Cabinet Lock	1	

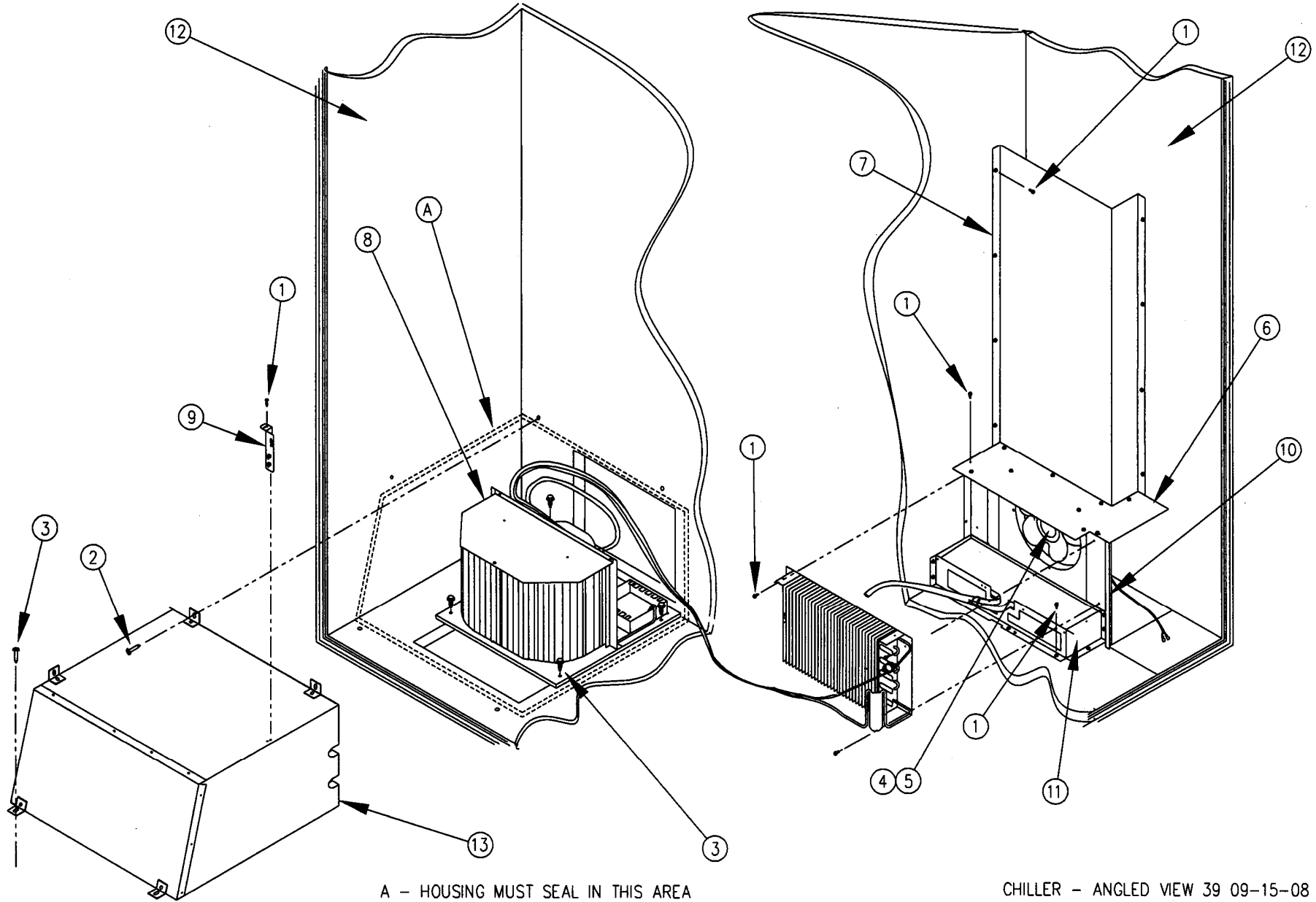
CABINET RIGHT SIDE PARTS ILLUSTRATION



CABINET RIGHT SIDE PARTS LIST

INDEX NO.	PART NO.	PART NAME	QTY	NOTES
1	3000	Sheet Metal Screw TEK #8-18	54	
2	3006-08	Nut, 8-32, Hex, Machine Screw	1	For Attaching Power Harness
3	3009-02	Rivet, Pop, Steel, 1/8 x 1/4 Grip Length	2	
4	3009-04	Rivet, Pop, Steel, 1/8 x 3/8" Grip Length	4	For Attaching 21479
5	3017-10	Washer, #10 SAE Flat	2	For Power Harness
6	3030	Filter, RFI, 5A	1	For Filtering Electrical Noise.
7	3084-10	Screw, Sems, 8-32, 1-1/4" Phillips	1	For Power Harness
8	3133-30	Assembly, 1 Fuse Holder With 2 Fuses	1	Use P/N 3097 3AG Fast Blow Fuse Only
9	3165	Ballast, 230V 50Hz, 18 W (European)	1	For Operating 3160 Fluorescent Lamp
10	3191	Filter, RFI, CE Machines	1	For Filtering Electrical Noise
11	3257	Transformer, Class II, 120V / 24V	1	For 120V Line Power
12	3258	Transformer, CE, 240V / 24V	1	For 240V Line Power
13	3274	Relay, Refrigeration, Single Pole	1	For 24V Control of Optional Chiller
14	3284	Switch, Rocker, On/Off	1	For 24VAC Circuit Control
15	20207	Cover Plate, Column, Fixed, Top and Bottom	2	
16	20211	Cover Plate, Transformer	1	
17	20213	Flange, Right Vertical	1	
18	20288	Harness, Ballast Assembly, 220V 50Hz	1	220V Single
19	20563	Harness, Ballast Assy 2	1	110V Single
20	20730	Harness, Ballast, Dual Lamp, 110VAC	1	
21	21053	Stiffener, Right Vertical Rail Mount	1	
22	21476	Rail Mount, Right Vertical, Ver 2	1	
23	21479	Plate, Fuse Holder, Socket And Power Switch Mount	1	Attached Inside of Rail Mount
24	21509	Decal, 24V Fuse, Ver. 2	1	
25	22071	Assembly, Cabinet, Ver. 4, 39"	1	

CHILLER PARTS ILLUSTRATION - ANGLED VIEW



A - HOUSING MUST SEAL IN THIS AREA

CHILLER - ANGLED VIEW 39 09-15-08

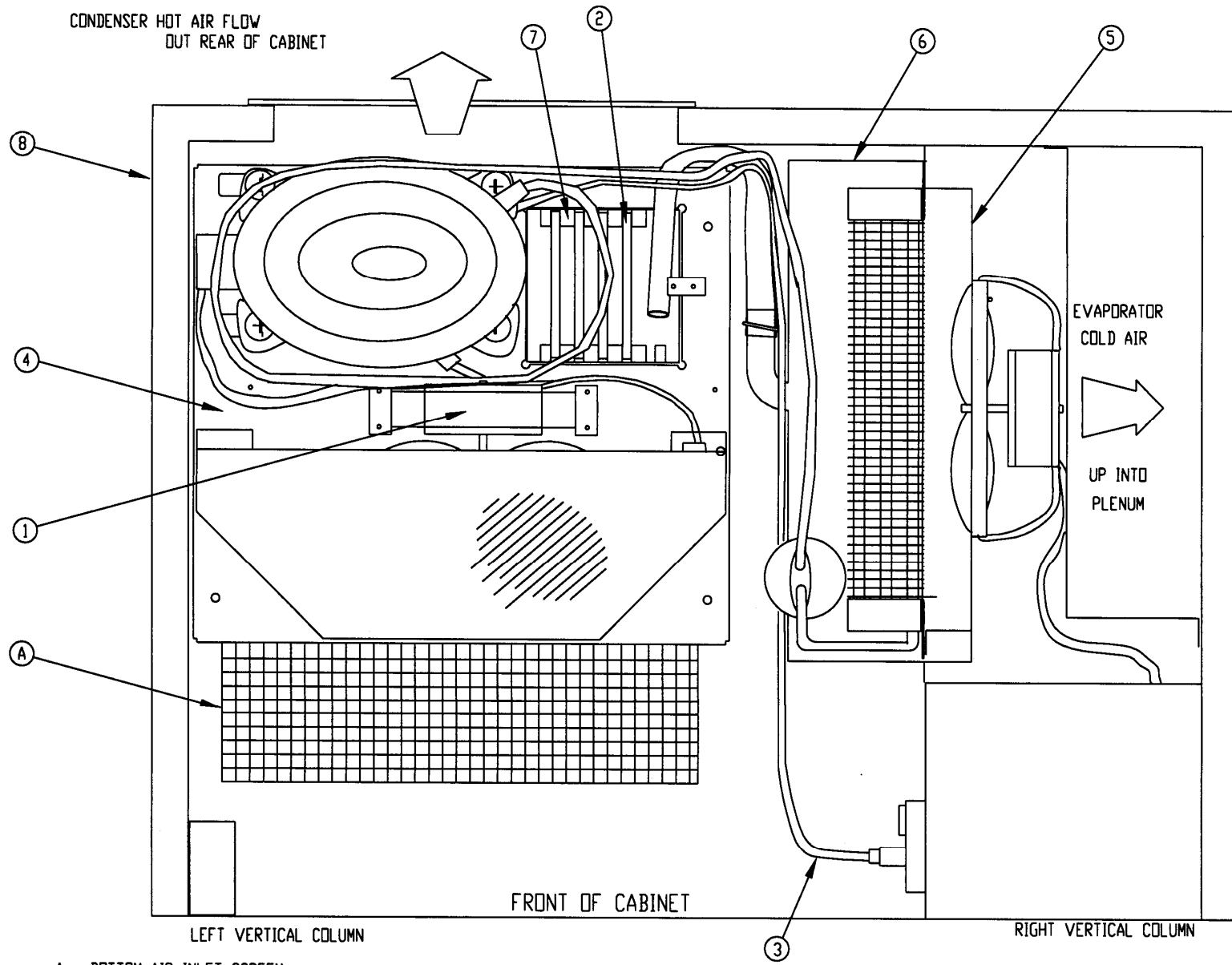
CHILLER PARTS LIST - ANGLED VIEW

ITEM	PART NO	PART DESCRIPTION	QTY	NOTES
1	3000	Sheet Metal Screw TEK #8-18	46	
2	3018-06	Screws, ¼ x ¾, Self Tapping, Hex Head	2	For Attaching To Tank Walls
3	3018-08	Screws, ¼ x 1, Self Tapping, Hex Head	6	For Attaching To Tank Floor
4	3106	Evaporator Fan/Motor Assembly, 220V, 50Hz, 1 Phase	1	Note Voltage!
5	3107	Evaporator Fan/Motor Assembly, 110V, 60Hz, 1 Phase		
6	20316	Evaporator Cover Plate	1	
7	20317	Evaporator Plenum	1	
8	20530	Assembly, 1/4, Chiller, 120V	1	See Note
	20531	Assembly, 1/4, Chiller, 220V		See Note
9	21424	Bracket, Temperature Sensor, Sensit II	1	
10	21991	Evaporator Mounting Panel, Stamped Drain Pan	1	For Stamped Pan Assemblies
11	21992	Assembly, Stamped Evaporator Drain Pan	1	Use with 21991, Evaporator Mounting Panel
12	22071	Assy., Cabinet, VER 4, 39"	1	Contact AMS For Your Application
13	22105	Assembly, Chiller Housing, English (39")	1	Housing Must Seal Against Cabinet As Shown
	22105-01	Assembly, Chiller Housing, Spanish (39")		Housing Must Seal Against Cabinet As Shown

NOTE: Chiller assemblies are charged with refrigerant and are replaceable only as an assembly. The refrigeration system is pressurized and sealed at the factory. Puncturing or cutting any component in the system will cause refrigerant gas and liquid to be propelled out of the system, creating an immediate physical hazard. Use caution to avoid accidentally opening the refrigerant system.

It should also be noted that releasing refrigerant to the atmosphere is a federal crime and is punishable by law. Any service work requiring the system to be opened must be performed by a licensed technician using certified recovery equipment. Unauthorized service to the sealed refrigerant system may void the warranty.

CHILLER PARTS ILLUSTRATION - TOP VIEW



A = BOTTOM AIR INLET SCREEN

CHILLER TOP VIEW 39 9-15-08

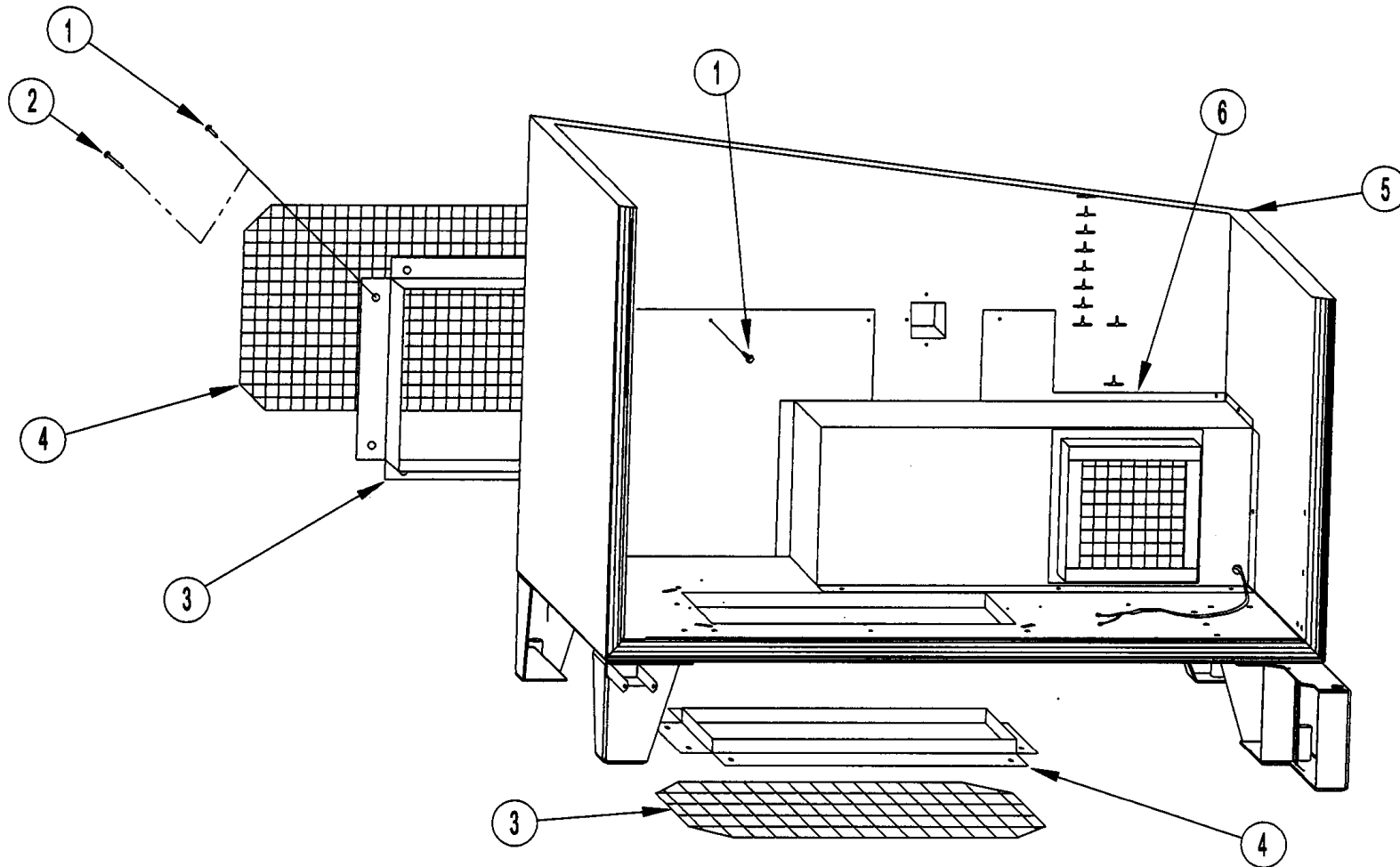
CHILLER PARTS LIST - TOP VIEW

ITEM	PART NO	PART DESCRIPTION	QTY	NOTES
1	3065	Fan, Condenser Assembly, 220V, 50Hz, 1 Phase	1	Note Voltage!
	3108	Fan, Condenser Assembly, 110V, 60Hz, 1 Phase	1	Note Voltage!
2	3093	Sponge (Condenser Drain Pan)	4	
3	20144	Refrigeration Harness	1	Use With Both 110V or 220V Systems
4	20530	Assembly, 1/4 Chiller, 120V	1	See Note
	20531	Assembly, 1/4 Chiller, 240V	1	See Note
5	21991	Evaporator Mounting Panel, Stamped Drain Pan	1	
6	21992	Assembly, Stamped Evaporator Drain Pan	1	
7	22048	Condenser Drain Pan, Formed	1	
8	22071	Assy., Cabinet, VER 4, 39"	1	Contact AMS For Your Application

NOTE: Chiller assemblies are charged with refrigerant and are replaceable only as an assembly. . The refrigeration system is pressurized and sealed at the factory. Puncturing or cutting any component in the system will cause refrigerant gas and liquid to be propelled out of the system, creating an immediate physical hazard. Use caution to avoid accidentally opening the refrigerant system.

It should also be noted that releasing refrigerant to the atmosphere is a federal crime and is punishable by law. Any service work requiring the system to be opened must be performed by a licensed technician using certified recovery equipment. Unauthorized service to the sealed refrigerant system may void the warranty.

CHILLER OPTION - VENTILATED CABINET ILLUSTRATION



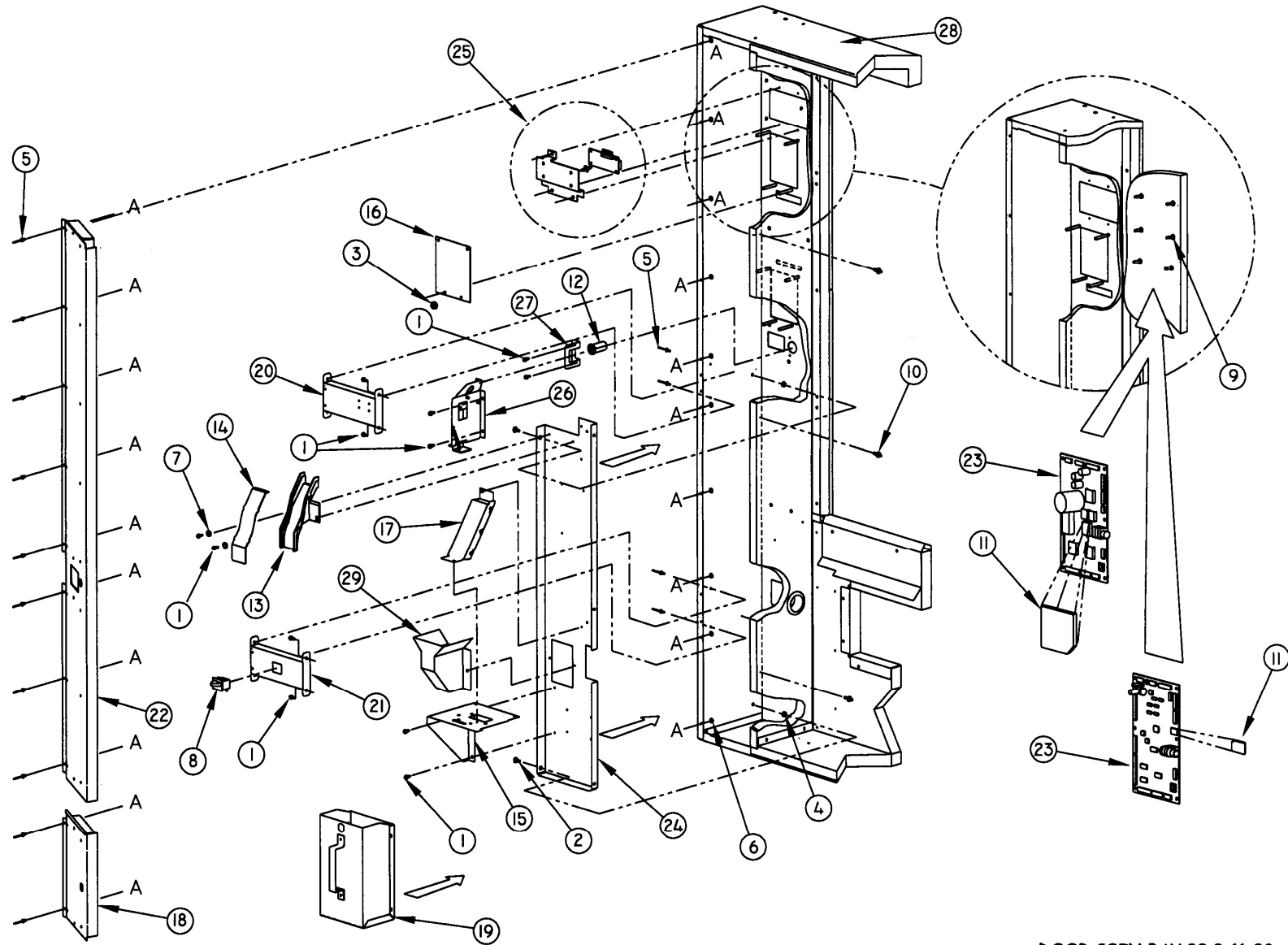
CHILLER OPTION - VENTILATED CABINET PARTS LIST

ITEM	PART NO.	PART DESCRIPTION	QTY	NOTES
1	3000	Screw, Sheet Metal, TEK 8-18	16	Qty For Two Trim Parts
			12	Qty For Ventilator Assembly
2	3000-06	Screw, Sheet Metal, TEK 8-18	8	Replace Item 1 For Rear Trim only When Option P/N 21308 is Installed
3	20275	Trim, Chiller Hole	1	35" and 39" use same rear trim.
4	20600	Screen, Rear, Insect (39") Aluminum 18x16 Mesh	1	35" and 39" use same rear screen.
	21040	Screen, Rear Chiller Hole, 8 Mesh (1/4" X 1/4")		35" and 39" use same rear screen.
	21308	Screen, Expanded Metal, Rear Chiller Hole (39")	1	35" and 39" use same option. Add to other rear screens. For Mexico.
5	22071	Assembly, Cabinet, Ver. 4 (39")	1	Tank is Inside, Wrapper is Outside
6	22080	Assembly, Ventilator, Ver. 4, 110V (39")	1	

General Note: The rear opening and the bottom opening are not the same size on 35" Cabinets (ECN 1770). All screen materials are fitted to trim parts, and trim parts are attached to the outside of the cabinet with screws. The combination of screens may differ. Covers are not used. Cabinet is shown without any other parts.

Ambient snack merchandisers have no chillers or chiller parts. Chiller units provide refrigeration in the cabinet.

DOOR COIN BAY ILLUSTRATION



DOOR COIN BAY 39 9-11-08

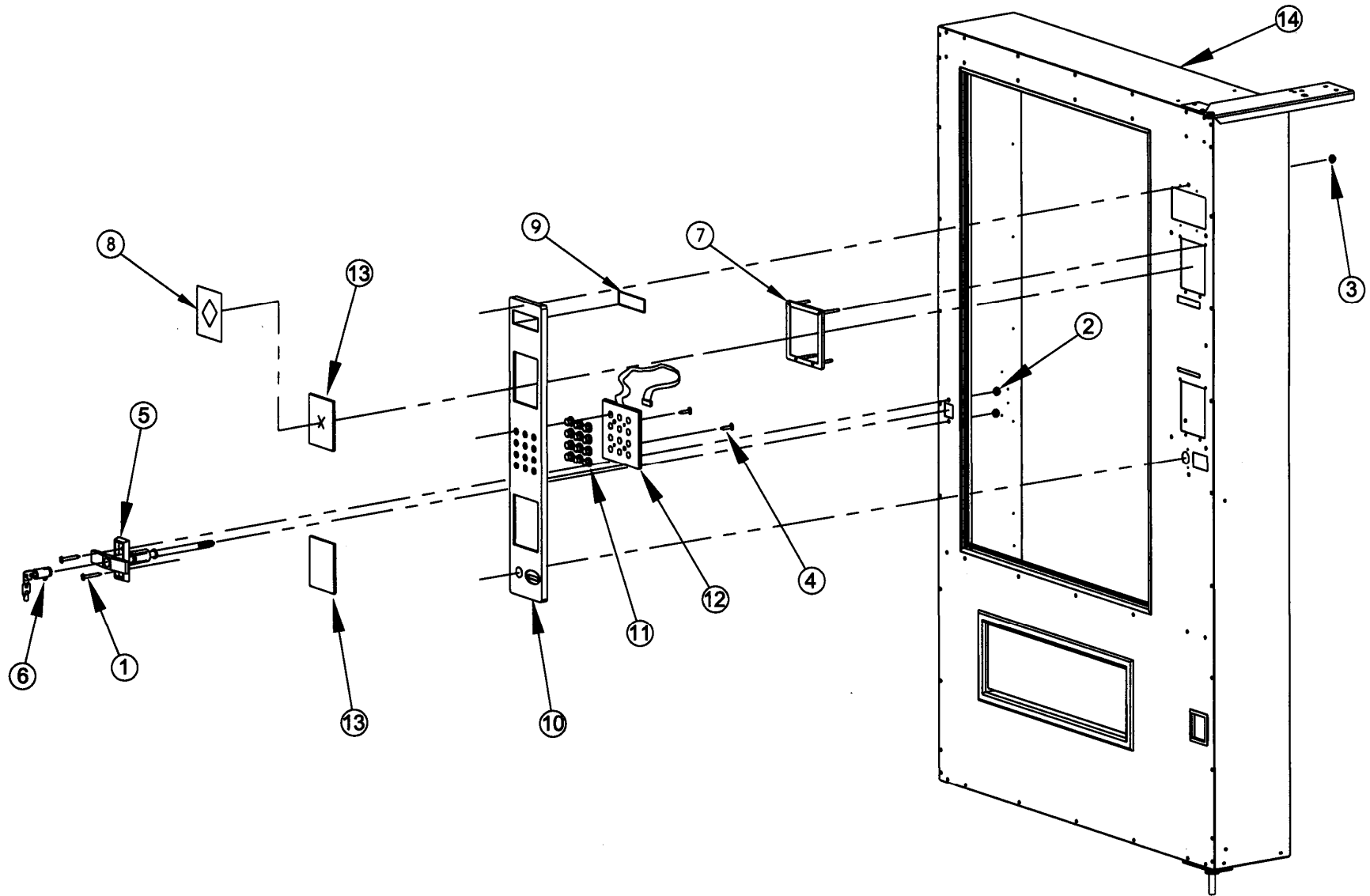
DOOR COIN BAY PARTS LIST

INDEX NO.	PART NO.	PART NAME	QTY	NOTE
1	3000	Screw, Sheet Metal TEK 8-18	18	
2	3005-04	Carriage Bolt, #10-24, 1/2"	5	
3	3006-08	Nut, Hex, Machine Screw, #8-32	8	4 per DBV Opening
4	3006-10	Nut, Hex, Machine Screw, #10-24	5	
5	3009-04	Rivet, Steel, 1/8", Black, 3/8"-Grip Length 1/4"	12	
6	3017-06	Washer, Flat Steel, SAE Std., #6 Screw 5/32	10	
7	3017-10	Washer, Flat Steel, SAE Std., #10 Screw 7/32 X 1/2	2	
8	3036	Switch, Panel Mount Rocker	1	Switch, N.C.
9	3037-1	PC Board Support (3/16")	6	For Control Board
10	3038	Rivet, Nylon, Trim	5	
11	3248/3319	Program Chip, Snack, Sensit II	1	Contact AMS for Sensit II applications.
	3425	Program Chip, Snack, S3		Contact AMS for Sensit 3 applications.
12	20081	Scavenger Button	1	
13	20099	Coin Chute, Insert	1	
14	20100	Coin Chute Cover	1	
15	20129	Coin Box Bulkhead	1	
16	20181	DBV Cover Plate	2	Flat Steel Plate, 1 per DBV Opening
17	20339	Assembly, Coin Chute	1	
18	20343	Coin Door Assembly, Lower	1	
19	20526	Assembly, Coin Box	1	
20	20706	Door Stiffener, Upper, Without Fuse And Switch	1	Not Shown
	20709	Door Stiffener, Upper, Locking, W/O Fuse And Switch		
21	20707	Door Stiffener, Bottom With Switch	1	
22	20752	Assembly, Coin Door, Upper (51")	1	
23	21342	Control Board, Sensit II	1	See 23021 for S3
	23021	Control Board, Sensit 3		See 21342 for S2
24	22171	Mounting Panel, Changer, Multi-Use	1	
25	22305	Assembly, Display, VER 3, Escutcheon, Sensit II	1	Contains display board
26	22343	Assembly, Scavenger System, VER. 2, Plastic Escutcheon	1	

27	22367	Scavenger Stop Bracket, Plastic Escutcheon	1	
28	23153	Assy. Door, Snack, Exec. Series, AVP Lock Side W/ Lock Cover (39")	1	Contact AMS for your application
	23154	Assy. Door, Snack, Trim, AVP Lock Side W/Window, Lock Cover (39")		
	23195	Assy. Door, Snack, Exec. Series, 1-1/2 CU.FT. Hopper, 39"		
	22330	Assy. Door, Snack, No Trim, 1-1/2 CU.FT. Hopper, 39"		
	22377	Assy, Door, Snack, Sensit II, Less Options 1-1/2 CU. FT. Hopper, 39"		
29	23373	Assembly, Plastic Coin Cup	1	

THIS PAGE INTENTIONALLY LEFT BLANK

DOOR, EXTERNAL PARTS ILLUSTRATION

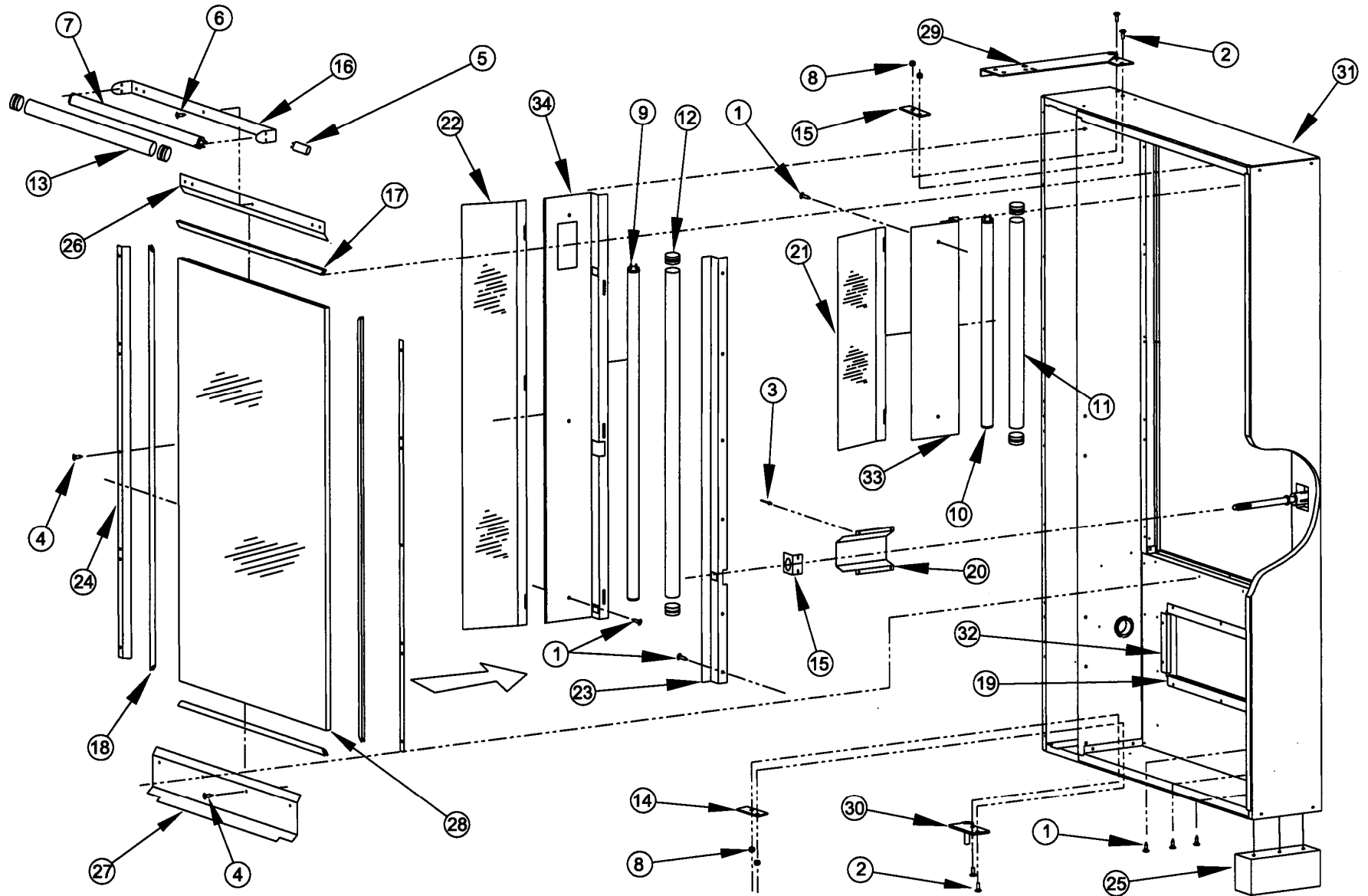


DOOR, EXTERNAL PARTS, 39 9-11-08

DOOR, EXTERNAL PARTS LIST

ITEM	PART NO.	PART NAME	QTY.	NOTE
1	3005-04	Carriage Bolt, #10-24, 1/2" Long	2	For Securing T-handle
2	3006-10	Nut, Hex, Machine Screw, #10-24	2	For Securing T-handle
3	3011	Self Threading Nut, 1/4" Stud	8	For Securing Escutcheon
4	3289-02	Screw, Type B, #8, Pan Head, Phillips #2	2	For securing Keypad
5	20130	T-Lock Assembly	1	
6	20131	Lockset And Keys	1	
7	20344	Assembly, DBV Mounting Bezel	2	
8	20471	Decal, Guaranteed Delivery	1	
9	22175	Lens, Escutcheon, GFM, VER 2	1	
10	22176	Assembly, GFM Escutcheon, Numeric	1	Assembly is broken down in this list
11	22177	Button, 0.90" Dia. Round, Escutcheon	12	12 Key Escutcheon
12	22179	Keypad, Membrane, 3x4,GFM	1	12 Key Escutcheon
13	22184	Cover, DBV, Plastic Escutcheon, Ver 2.	2	
14	23153	Assy. Door, Snack, Exec. Series, AVP Lock Side W/ Lock Cover (39")	1	Contact AMS for your application
	23154	Assy. Door, Snack, Trim, AVP Lock Side W/Window, Lock Cover (39")		
	23195	Assy. Door, Snack, Exec. Series, 1-1/2 CU.FT. Hopper, 39"		
	22330	Assy. Door, Snack, No Trim, 1-1/2 CU.FT. Hopper, 39"		
	22377	Assy, Door, Snack, Sensit II, Less Options 1-1/2 CU. FT. Hopper, 39"		

DOOR HINGES, GLASS AND FLOURESCENT LAMPS ILLUSTRATION



DOOR, HINGES, GLASS AND FLOURESCENT LAMPS 39 9-12-08

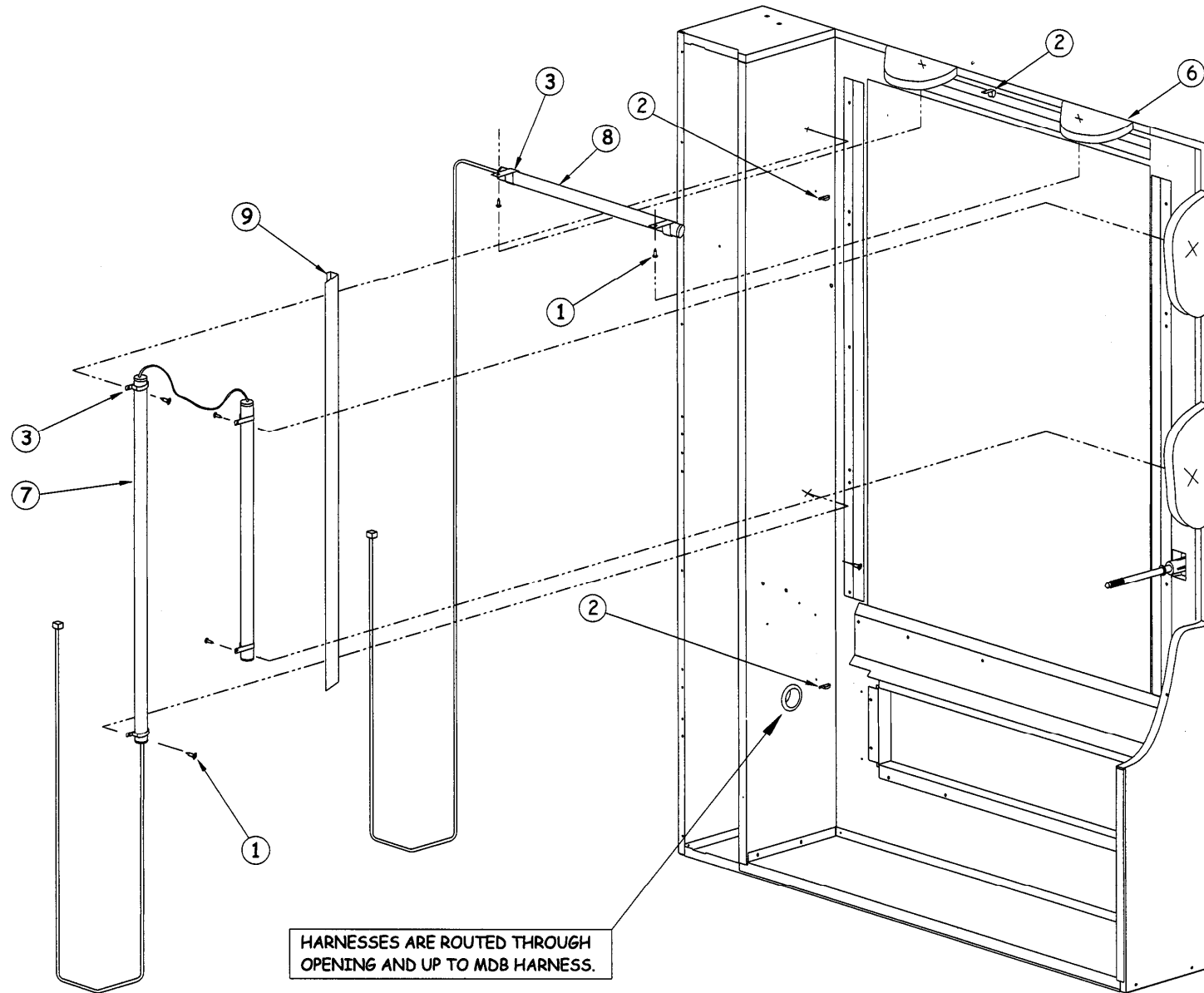
DOOR HINGES, GLASS AND FLOURESCENT LAMPS PARTS LIST

ITEM NO.	PART NO.	PART DESCRIPTION	QTY.	NOTE
1	3000	Screw, Sheet Metal, TEK 8-18	14	
2	3004-06	Carriage Bolt, ¼-20, ¾"	4	
3	3009-02	Rivet, Pop, Steel, 1/8 Diameter	4	
4	3018-06	Screw, ¼ X ¾, Self Tapping, Hex Head	20	For Glass Retainers
5	3056	Starter, FS2	1	For Single Fluorescent Lamp , 110V
	3163	Starter, S10		For Single Fluorescent Lamp , 230V, 50 Hz.
6	3072-06	Screw, Machine, #4-36 (3/4" Long)	3	For Single Fluorescent Lamp, 110V
7	3105	Fluorescent Lamp, 18", 1" Diameter	1	For Single Fluorescent Lamp, 110V
8	3153-11	Nut, Hex With Lock Washer	4	
9	3202	Fluorescent Lamp, 25W, F025/841	1	For Fluorescent Lamp Option
10	3203	Fluorescent Lamp, 17W, F017/841	1	For Fluorescent Lamp Option
11	3234	Lamp Cover, T8, 24", Clear, With End Caps	1	For 24" Fluorescent Lamp Shield
12	3240	Lamp Cover, T8, 36", Clear, With End Caps	1	For 36" Fluorescent Lamp Shield
13	3279	Lamp Cover, T8, 18", Clear, With End Caps	1	For Single Fluorescent Lamp Option
14	20206	Hinge, Washer Plate	2	
15	20244	Lock Bolt Mounting Bracket	1	
16	20579	Lamp Mtg. Bracket, Universal	1	For Single Fluorescent Lamp 110V and 230V
17	20330-03	Trim, Extruded Edge	2	26.7", Horizontal, Use with Glass
18	20330-04	Trim, Extruded Edge	2	42.1", Vertical, Use with Glass
19	20401	Retainer, Horizontal Eyelet	2	
20	20447	Lock Bolt Cover	1	
21	20734	Lamp Cover, 24" Vertical	1	Clear Shield, For Dual Lamp
22	21013	Lamp Cover, 36" Vertical, Snack	1	Clear Shield For Dual Lamp
23	21051	Tray Restraint, Snack, Reduced Depth	1	
24	21210	Retainer, 42" Glass Window, Vertical 1/8" (39")	1	
25	21224	Retainer, 42" Dual Glass Window, Vertical, 5/8"	1	Install When Vendor is on Site
	21165	Assembly, False Leg		
26	21212	Retainer, Glass Window, Top, 1/8" (39")	1	
27	21223	Retainer, Dual Glass Window, Top, 5/8" (39")	1	
	21213	Retainer, Glass Window, Bottom 1/8" (39")		
28	21225	Retainer, Dual Glass Window, Bottom 5/8" (39")	1	
	21216	Window, Glass, Single Pane, 1/8 th Inch (39")		

29	21218	Window, Glass, Dual Pane, 5/8 th Inch (39")	1	
	21703	Assembly, Top Hinge, 3/16"		
30	21704	Assembly, Hinge Bottom, 3/16"	1	
31	22330	Assy. Door, Snack, No Trim, 1-1/2 CU.FT. Hopper, 39"	1	Contact AMS for your application
32	23153	Assy. Door, Snack, Exec. Series, AVP Lock Side W/Lock Cover (39")	1	When Viewed Behind Door
	23154	Assy. Door, Snack, Trim, AVP Lock Side W/Window, Lock Cover (39")		
	23195	Assy. Door, Snack, Exec. Series, 1-1/2 CU.FT. Hopper, 39"		
	22377	Assy, Door, Snack, Sensit II, Less Options 1-1/2 CU. FT. Hopper, 39"		
	22351	Retainer, Vertical Eyelet (Right Hand)		
33	22351-01	Retainer, Vertical Eyelet (Left Hand)	1	
	22427	Lamp Bracket, 24" Vertical	1	For Dual Fluorescent Lamp Option
34	22428	Lamp Bracket, 36" Vertical	1	For Dual Fluorescent Lamp Option

THIS PAGE INTENTIONALLY LEFT BLANK

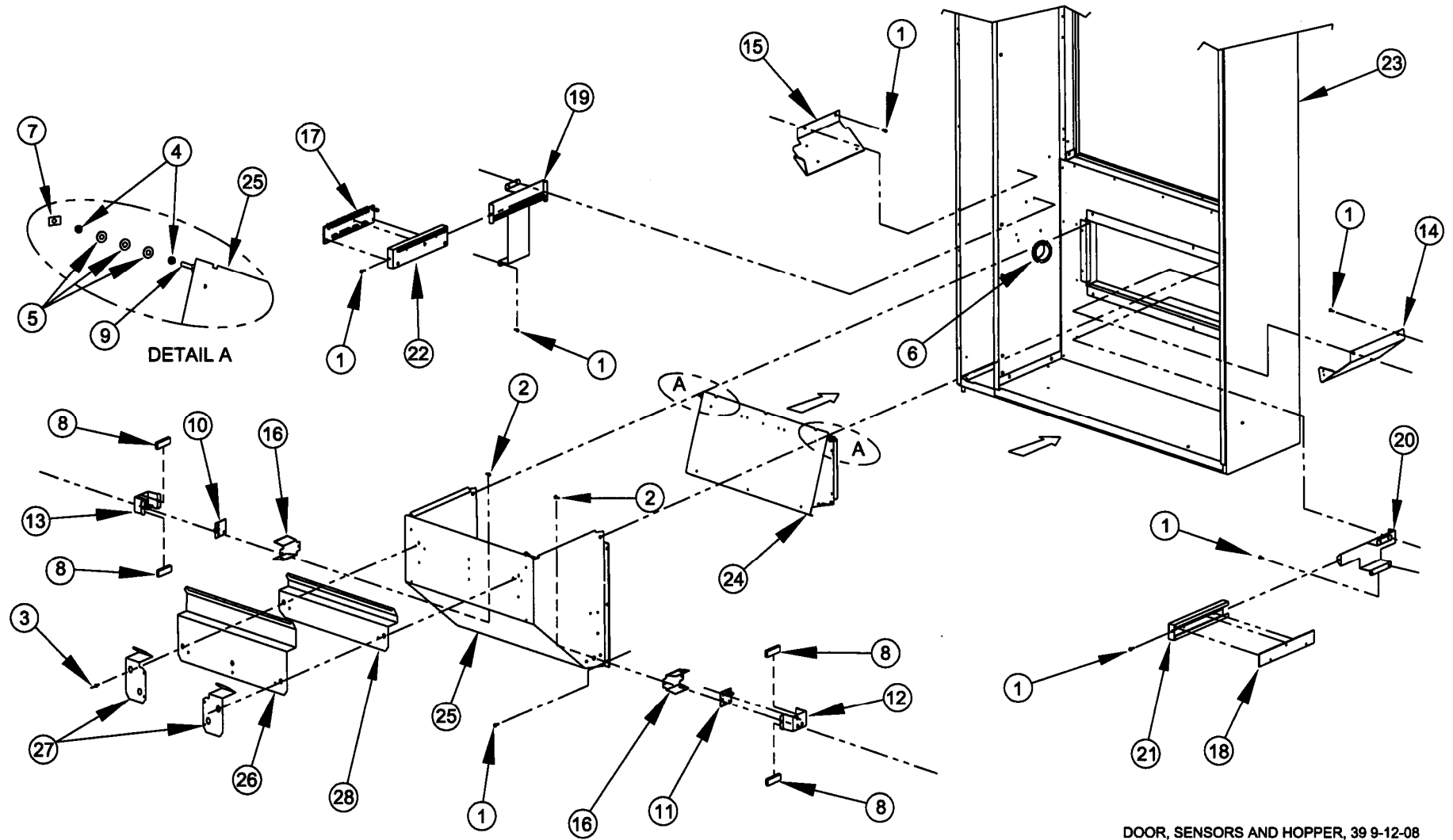
DOOR, OPTIONAL LED LAMP ILLUSTRATION



DOOR, OPTIONAL LED LAMP PARTS LIST					
ITEM NO.	PART NO.	PART DESCRIPTION	QTY FOR SINGLE	QTY FOR DUAL	NOTE
1	3000	Screw, TEK 8-18	5	8	
2	3024-06	Cable Clamp, Black, Nylon	3	3	For Securing Harness
3	3024-16	Cable Clamp, Black, Nylon	2	5	For Securing Lamps
4	20156-01	Harness, Ground	1	1	In Electrical Panel - Not Shown
5	20158	Harness, Multi-Drop Bus (MDB)	1	1	From Control Board - Not Shown
5	22330	Assy. Door, Snack, No Trim, 1-1/2 CU.FT. Hopper, 39"	1	1	Contact AMS for your application
	23153	Assy. Door, Snack, Exec. Series, AVP Lock Side W/Lock Cover (39")			
	23154	Assy. Door, Snack, Trim, AVP Lock Side W/Window, Lock Cover (39")			
	23195	Assy. Door, Snack, Exec. Series, 1-1/2 CU.FT. Hopper, 39"			
	22377	Assy. Door, Snack, Sensit II, Less Options 1-1/2 CU. FT. Hopper, 39"			
6	23521	Lamp, LED, 42", Vertical	0	1	Lamps Have Integral Harnesses
7	23522	Lamp. LED, 24"	1	1	Lamps Have Integral Harnesses
8	23561	Lamp Visor, LED, Vertical, Snack	0	1	
9	23624	Harness, Transformer, No Ballast	1	1	In Electrical Panel - Not Shown

The LED lamp options may not have been contracted for and installed on your vendor.

DOOR, SENSOR SYSTEM AND HOPPER ILLUSTRATION



DOOR, SENSOR SYSTEM AND HOPPER PARTS LIST

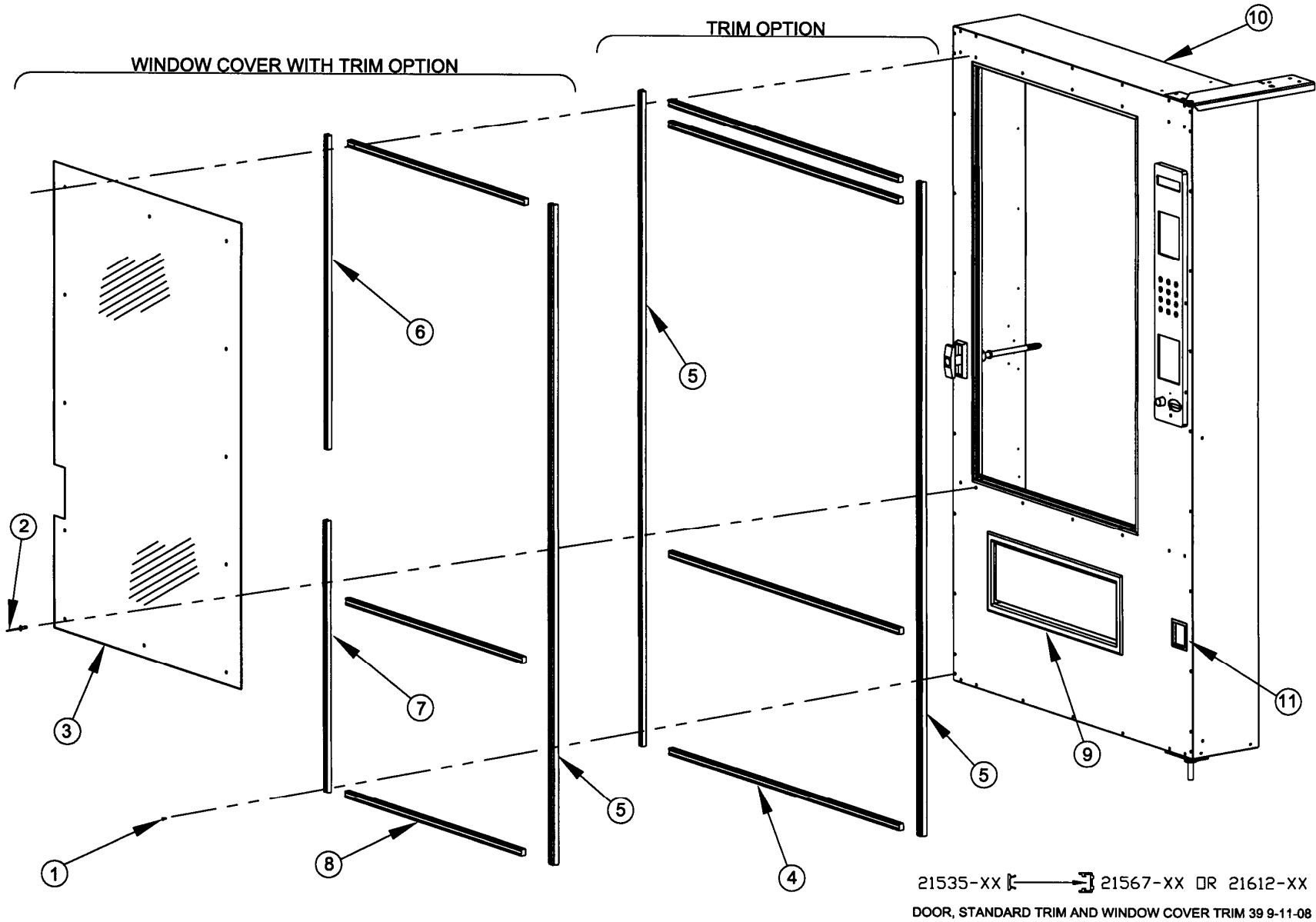
ITEM	PART NO.	PART DESCRIPTION	QTY.	NOTE
1	3000	Screw, TEK 8-18	24	
2	3002-04	Screw, Machine, Type F, 8-32	4	¾" Long, Self-Tap, Phillips, Round Head
3	3009-04	Rivet, Pop, Steel, 1/8 x 1/4 Grip	8	
4	3015	Bearing, Nyliner Snap-In	4	
5	3017-10	Washer, Flat Steel, SAE Std. , #10 Screw 7/32 X ½	6	
6	3025-24	Grommet, Rubber, 1-1/2 ID x (1-3/4 OD X .062 Groove)	1	Harness Pass-Through
7	3113	Pushnut, 3/16" Stud	2	
8	3237	Tape, 3/8" X 1/4" Urethane Foam	4	1-5/8" Long Each Piece
9	20108	Vend Door, Shaft (39")	1	
10	21385	Detector, Product Sensor, Sensit II	1	
11	21386	Emitter, Product Sensor, Sensit II	1	
12	21442	Assembly, Product Sensor Emitter Bracket, Sensit II	1	
13	21443	Assembly, Product Sensor Detector Bracket, Sensit II	1	
14	21457	Product Kicker, Left, Ver. 2	1	(Left Hand When Facing Front Of Door)
15	21458	Product Kicker, Right, Ver. 2	1	(Right Hand When Facing Front Of Door)
16	21613	Lens, Product Sensor Bracket, Sensit II	2	
17	22120	Sensor Board, Primary, Sensit II	1	
18	22121	Sensor Board, Secondary, Sensit II	1	
19	22124	Assembly, Primary Delivery Sensor Bracket, Sensit II	1	
20	22126	Assembly, Secondary Delivery Sensor Bracket, Sensit II	1	
21	22128	Assembly, Secondary Delivery Sensor Cover, Sensit II	1	
22	22130	Assembly, Primary Delivery Sensor Cover, Sensit II	1	
23	22330	Assy. Door, Snack, No Trim, 1-1/2 CU.FT. Hopper, 39"	1	Contact AMS for your application
	23153	Assy. Door, Snack, Exec. Series, AVP Lock Side W/Lock Cover (39")		
	23154	Assy. Door, Snack, Trim, AVP Lock Side W/Window, Lock Cover (39")		
	23195	Assy. Door, Snack, Exec. Series, 1-1/2 CU.FT. Hopper, 39"		
	22377	Assy, Door, Snack, Sensit II, Less Options 1-1/2 CU. FT. Hopper, 39"		
24	22327	Assembly, Vend Door, Snack, 1.5 CU. FT. Hopper (39")	1	
25	22384	Assembly, Vend Hopper W/O Wireway, 1.5 CU. FT. Hopper (39")	1	
26	22386	Deflector Plate, 3.71" Height, 1.5 CU. FT. Hopper (39")	1	Rivet to Hopper Under Other Trays

27	22387	Deflector Plate, 1.5" Helix Tray, 1.5 CU. FT. Hopper (RH)	1	Rivet to Hopper Under 1.5 Helix Tray
	22387-01	Deflector Plate, 1.5" Helix Tray, 1.5 CU. FT. Hopper (LH)	1	
28	22390	Deflector Plate, 2.25" Height, 1.5 CU. FT. Hopper (39")	1	Rivet to Hopper Under Other Trays

The product sensor option may not have been contracted for and installed on your vendor.

THIS PAGE INTENTIONALLY LEFT BLANK

DOOR, STANDARD TRIM AND WINDOW COVER TRIM PARTS LIST



DOOR, STANDARD TRIM AND WINDOW COVER TRIM PARTS LIST

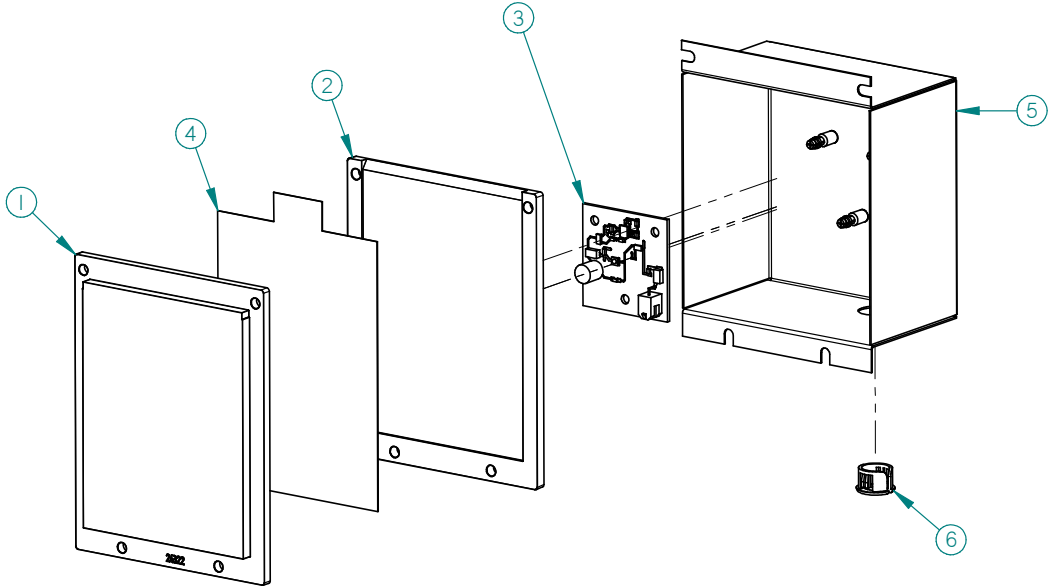
ITEM	PART NO.	PART NAME	STANDARD QTY	COVER QTY.	NOTE
1	3000	Screw, Sheet metal, TEK 8-18	28	28	
2	3172-02	Rivet, Aluminum, ¼" Diameter, Natural (1/4" Grip)	0	15	
3	20547	Window Cover, Polycarbonate (39"), .110 Thick	0	1	MR-10 Scratch Resistant
	20547-01	Window Cover, Polycarbonate (39"), .180 Thick	0		
	20547-02	Window Cover, Polycarbonate (39"), .234 Thick	0		
	20547-03	Window Cover, Polycarbonate (39"), .234 Thick	0		
4	21535-01	Trim, Plastic Insert, For Recessed Base (37.25")	4	0	Cabinet Width
	21567-01	Recessed Trim Base With Holes	4	0	Aluminum
	21612-01	Recessed Trim Base With Holes, Painted			Black
5	21535-03	Trim, Plastic Insert, For Recessed Base (65.38")	2	1	Hinge and Lock Side
	21567-03	Recessed Trim Base With Holes	2	1	Aluminum
	21612-03	Recessed Trim Base With Holes, Painted			Black
6	21535-06	Trim, Plastic Insert, For Recessed Base (30.2")	0	1	Above Lock
	21567-06	Recessed Trim Base With Holes	0	1	Aluminum
	21612-06	Recessed Trim Base With Holes, Painted			Black
7	21535-07	Trim, Plastic Insert, For Recessed Base (29.4")	0	1	Below Lock
	21567-07	Recessed Trim Base With Holes	0	1	Aluminum
	21612-07	Recessed Trim Base With Holes, Painted			Black
8	21535-15	Trim, Plastic Insert, For Recessed Base (29.68")	0	3	Window Width
	21567-15	Recessed Trim Base With Holes	0	3	Aluminum
	21612-15	Recessed Trim Base With Holes, Painted			Black

9	21624	Trim, Vend Eyelet	1	1	
10	23153	Assy. Door, Snack, Exec. Series, AVP Lock Side W/ Lock Cover (39")	1	1	Contact AMS for your application
	23154	Assy. Door, Snack, Trim, AVP Lock Side W/Window, Lock Cover (39")			
	23195	Assy. Door, Snack, Exec. Series, 1-1/2 CU.FT. Hopper, 39"			
	22330	Assy. Door, Snack, No Trim, 1-1/2 CU.FT. Hopper, 39"			
	22377	Assy. Door, Snack, Sensit II, Less Options 1-1/2 CU. FT. Hopper, 39"			
11	23372	Trim, Plastic Coin Cup	1	1	

Note: Trim Packages, Window Cover Packages and other options contracted for and installed at AMS may not apply to your vendor.

THIS PAGE INTENTIONALLY LEFT BLANK

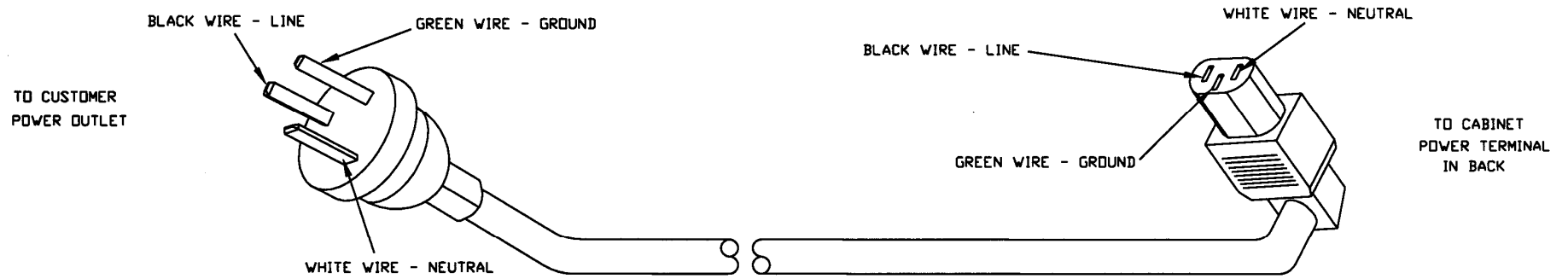
POS DISPLAY ILLUSTRATION



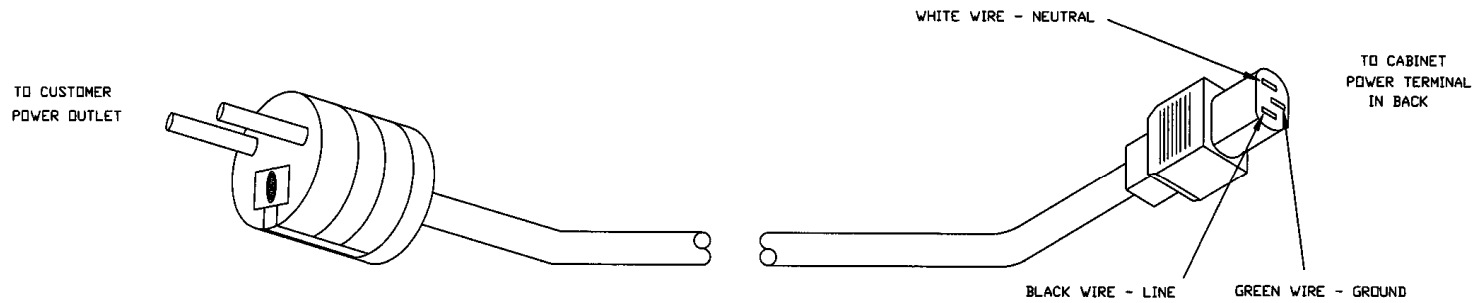
POS DISPLAY PARTS LIST

ITEM	PART NO.	PART DESCRIPTION	NOTE
1	24322	POS DISPLAY INSERT	
2	24323	POS DISPLAY DIFFUSER	
3	24329	LED BOARD	
4	24330	POS DISPLAY CARD (AMS)	ENGLISH
	24457	POS DISPLAY CARD (IAMS)	SPANISH
5	24339	LIGHT BOX ASSEMBLY	
6	3029-02	BUSHING	

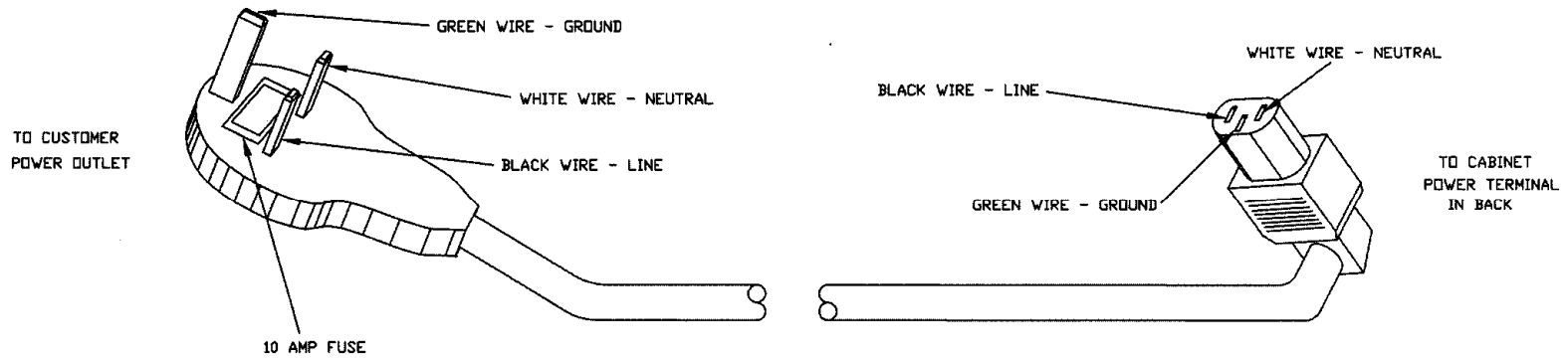
ELECTRICAL HARNESS ILLUSTRATIONS



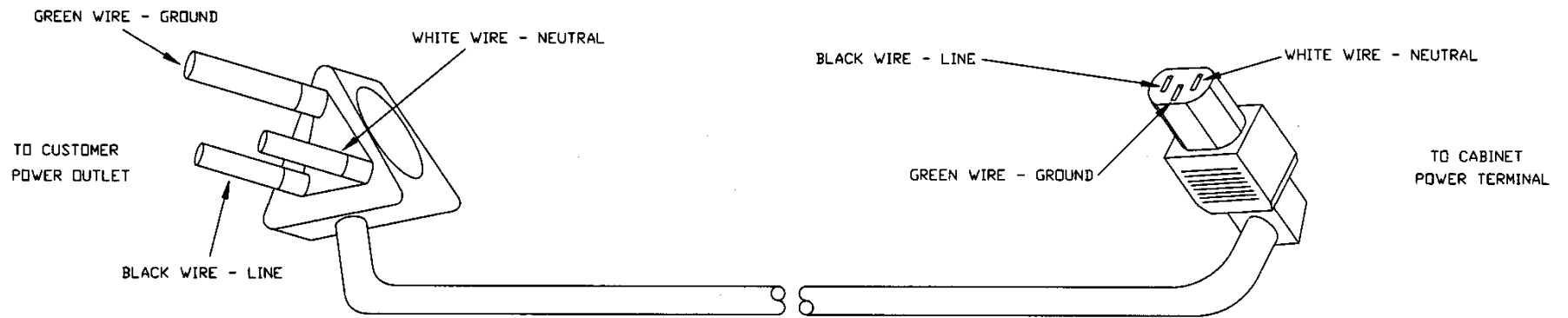
3173, POWER CORD, AUSTRALIA



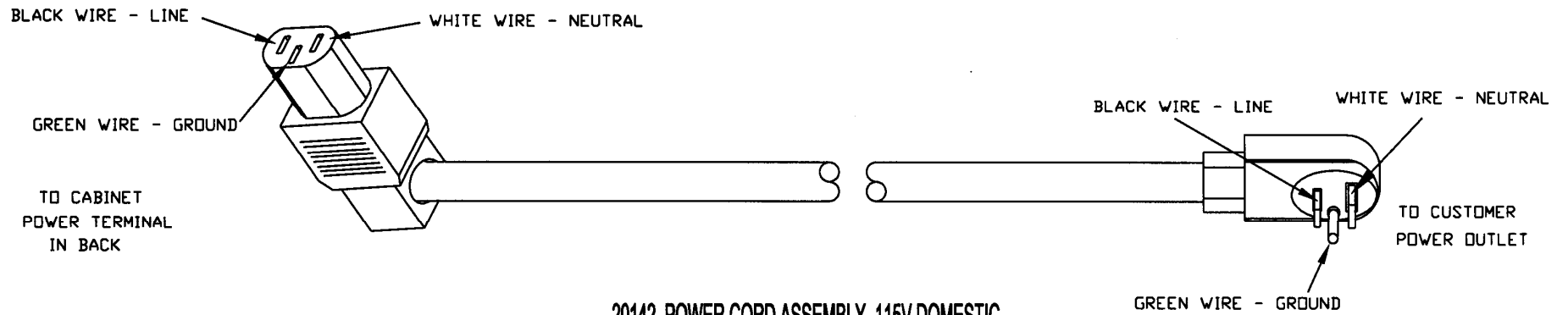
3193, POWER CORD, CONTINENTAL EUROPE



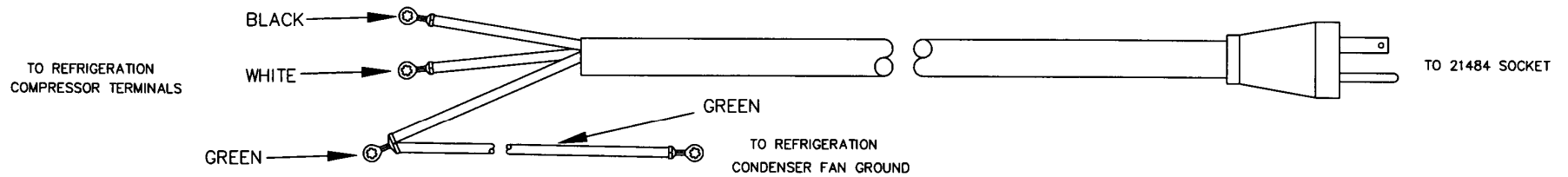
3194, POWER CORD, U.K. & IRELAND



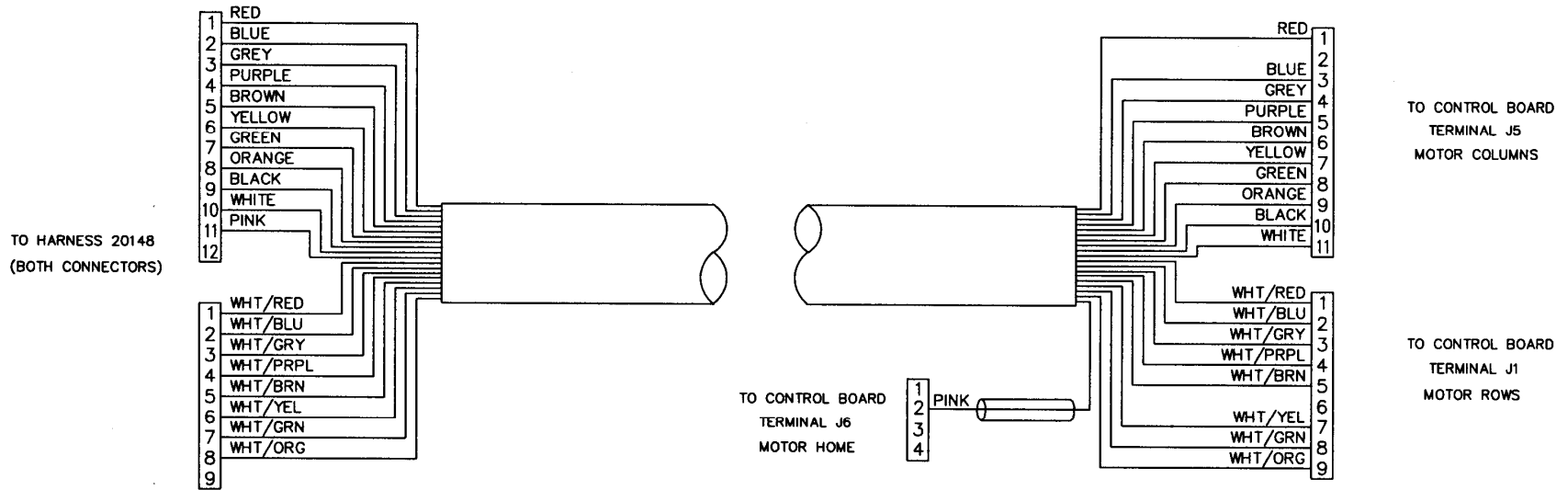
3208 POWER CORD, INDIA AND SOUTH AFRICA



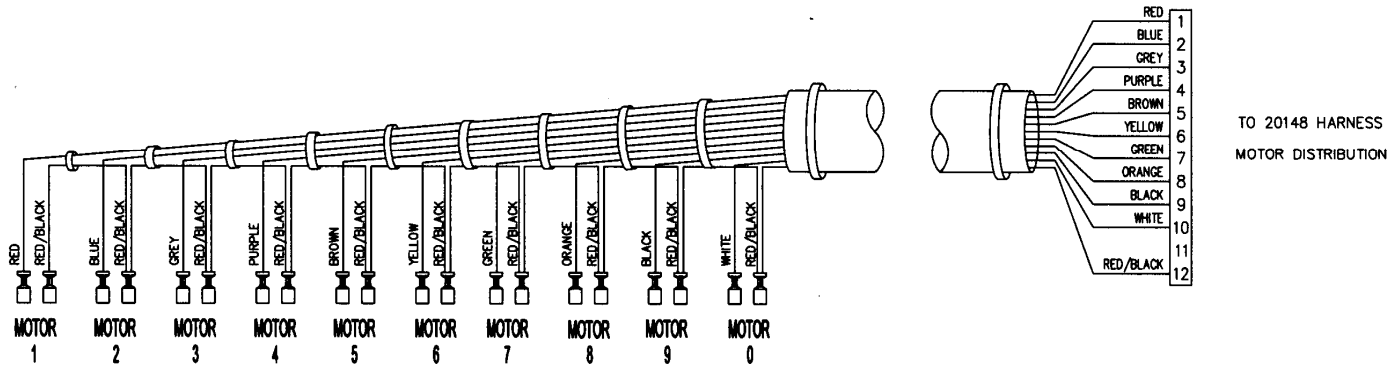
20142, POWER CORD ASSEMBLY, 115V DOMESTIC



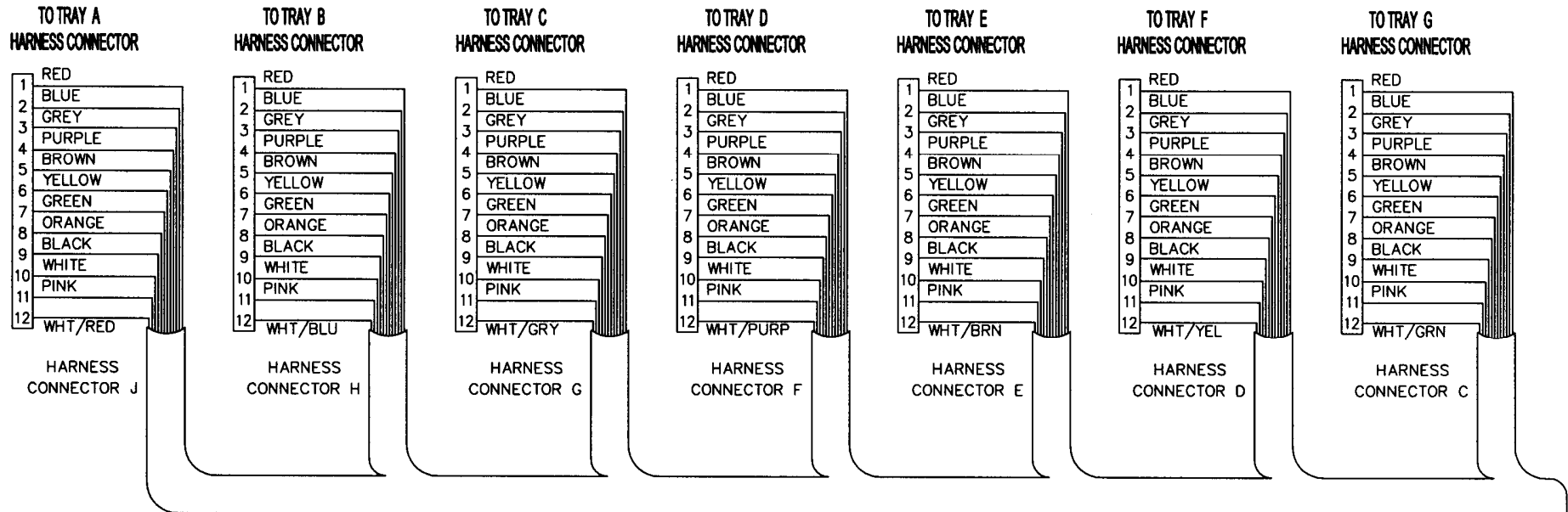
20144, HARNESS, REFRIGERATION



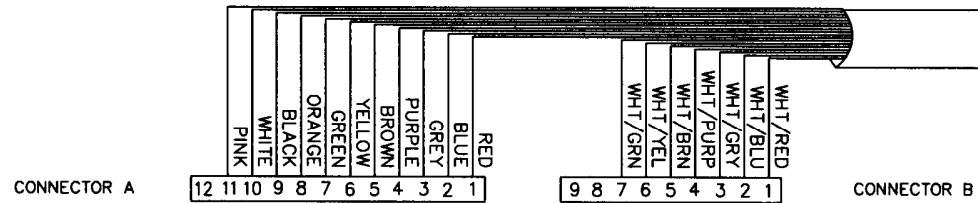
20146, HARNESS, DOOR MOTORS



20147, HARNESS, TRAY, 10 COLUMN

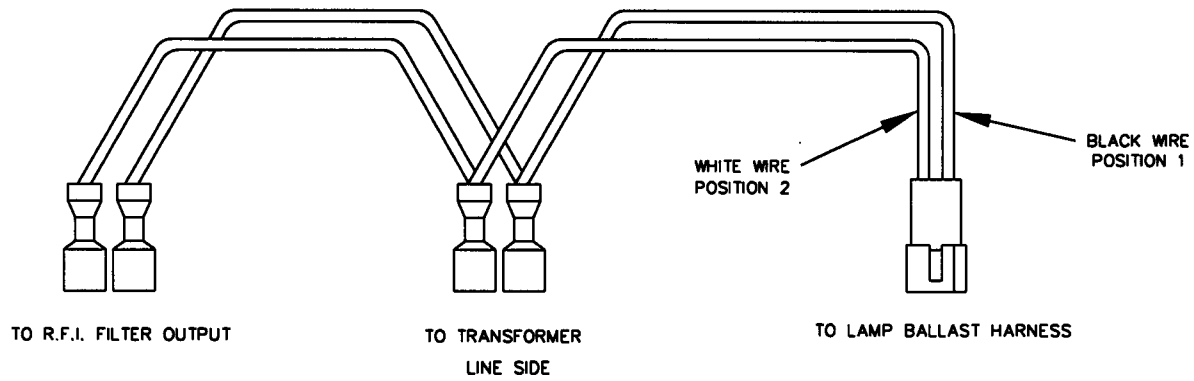


(CONNECTOR A IS JUMPERED TO ALL CONNECTORS TO TRAYS, PINS 1 -11)

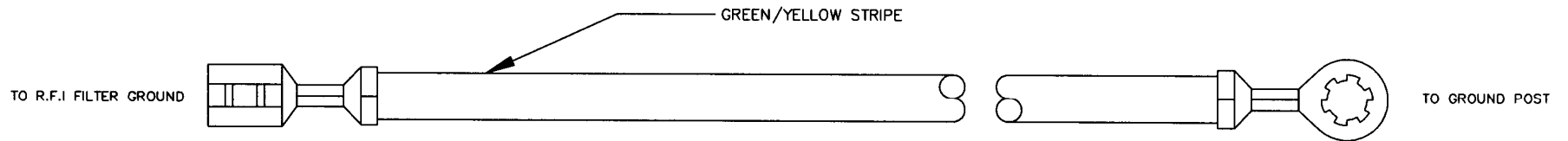


CONNECTOR A AND B TO 20146 HARNESS, DOOR MOTOR

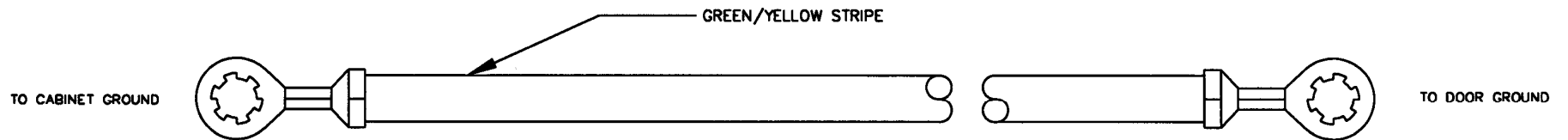
20148, HARNESS, MOTOR DISTRIBUTION



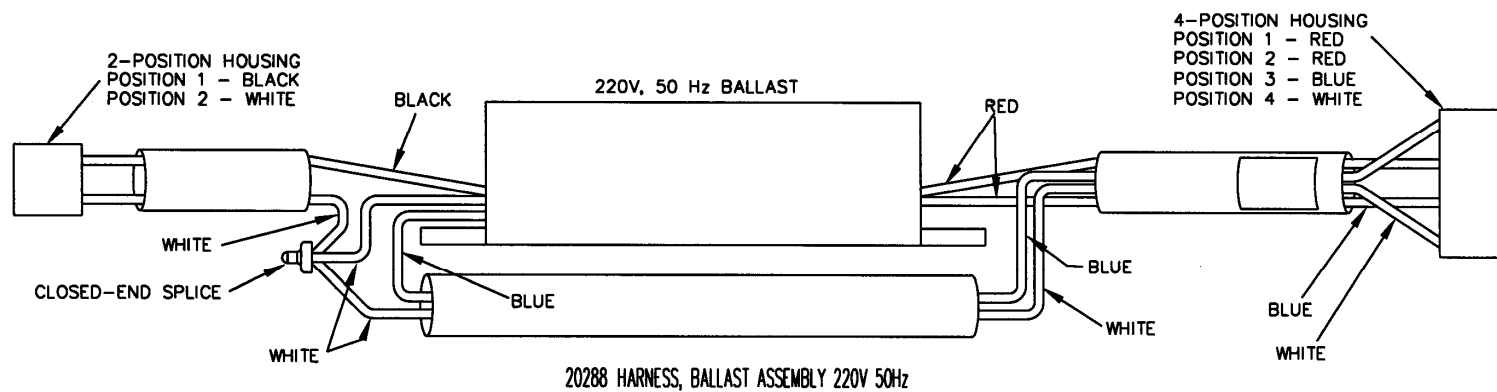
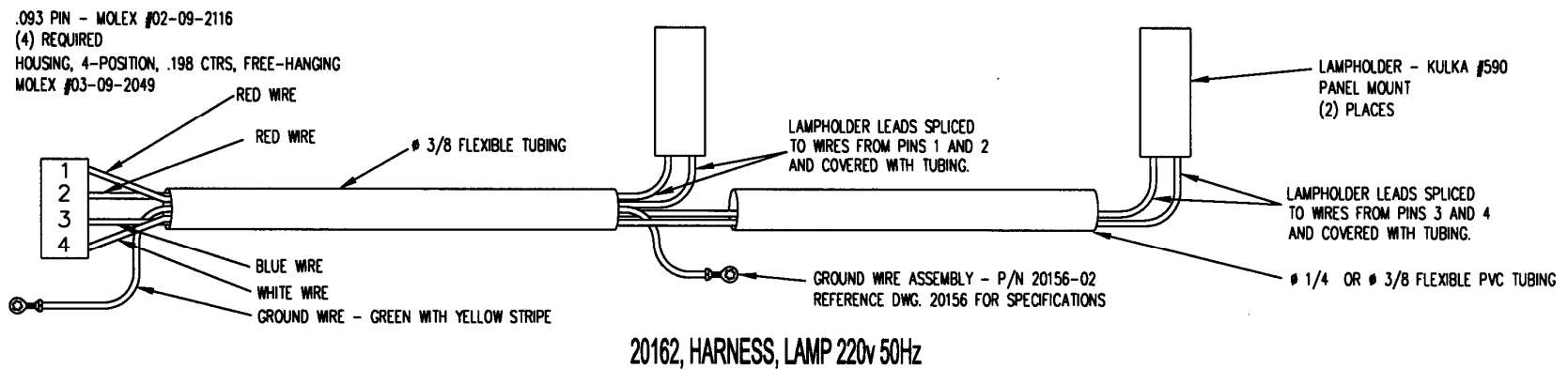
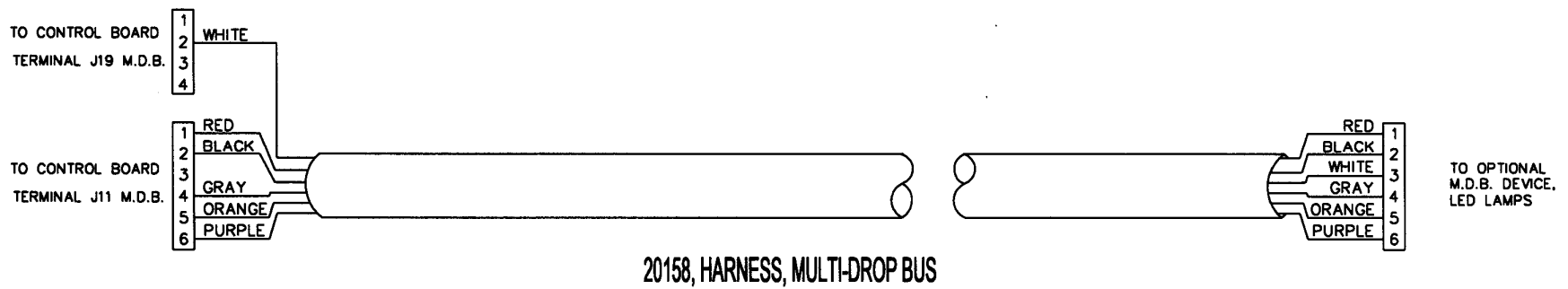
20149, HARNESS, BALLAST/TRANSFORMER LINE

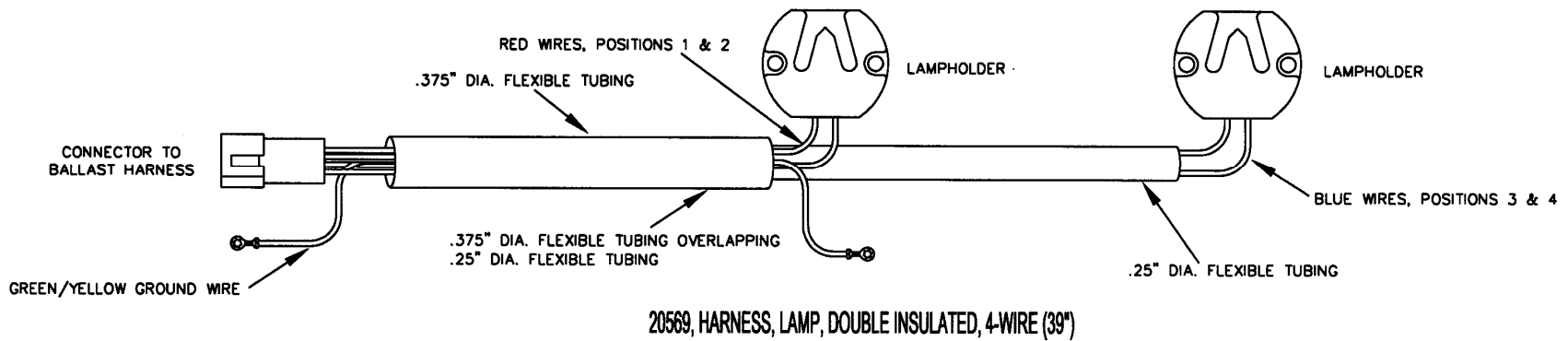
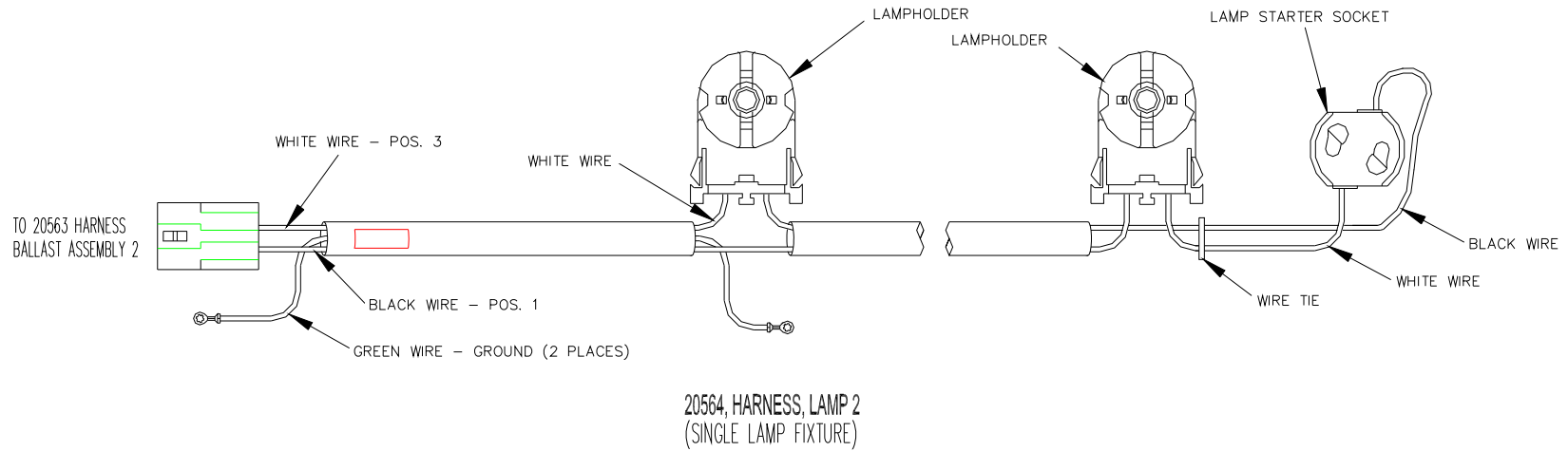
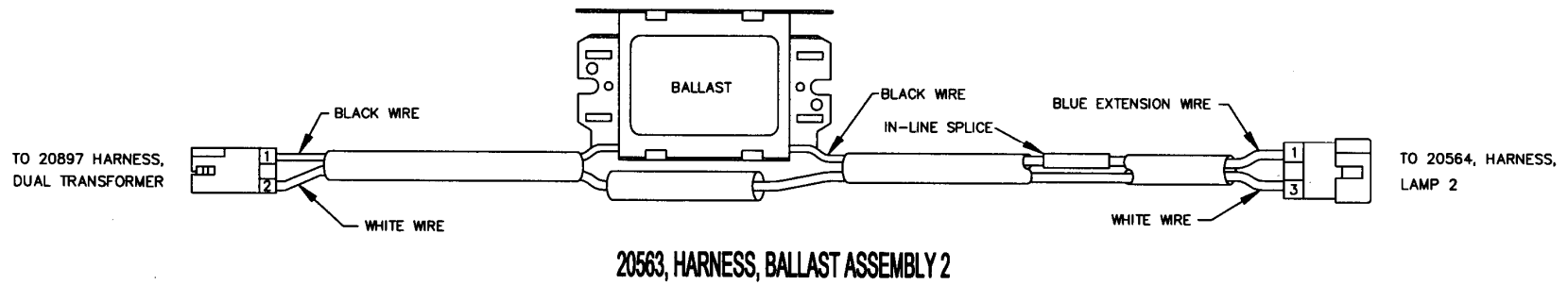


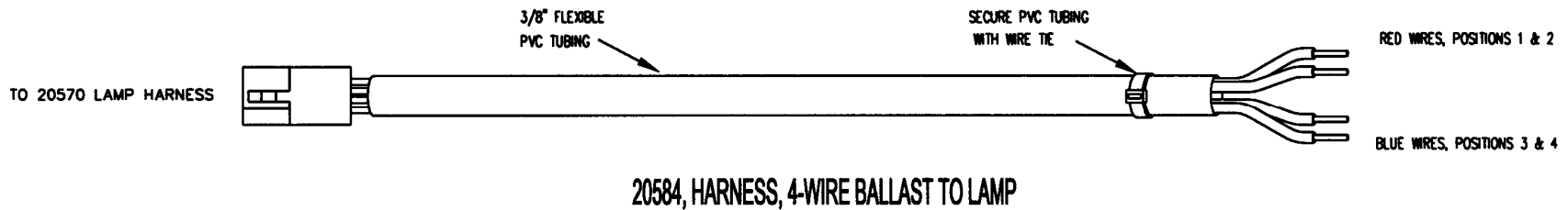
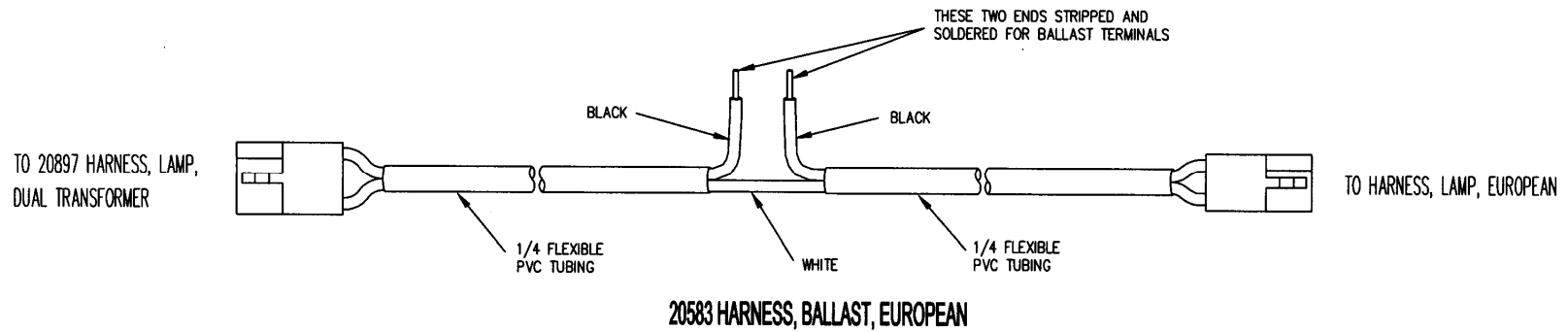
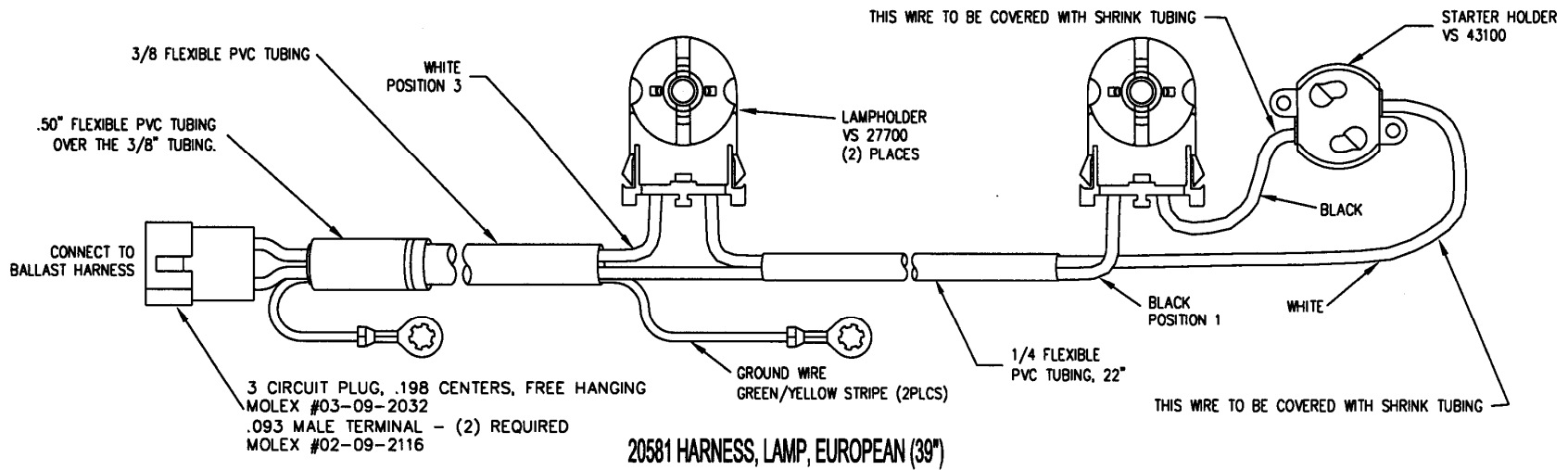
20154, HARNESS, R.F.I. FILTER GROUND

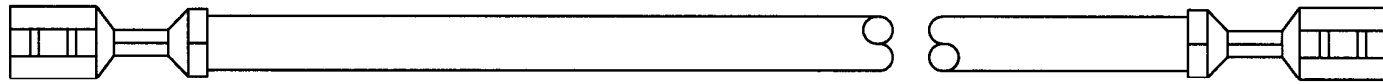
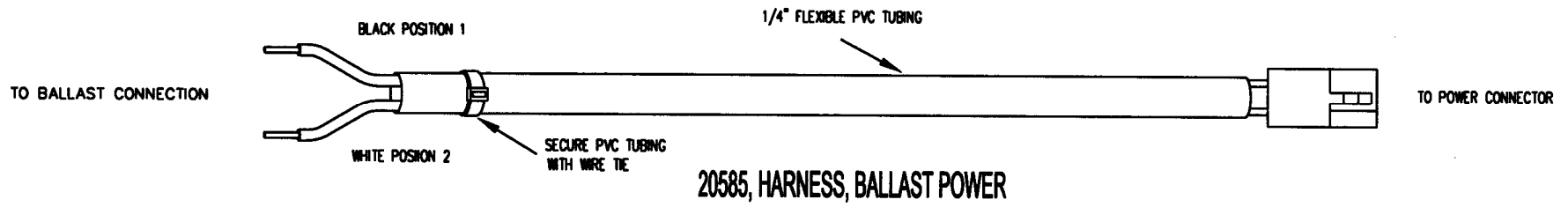


20156-01, HARNESS, GROUND



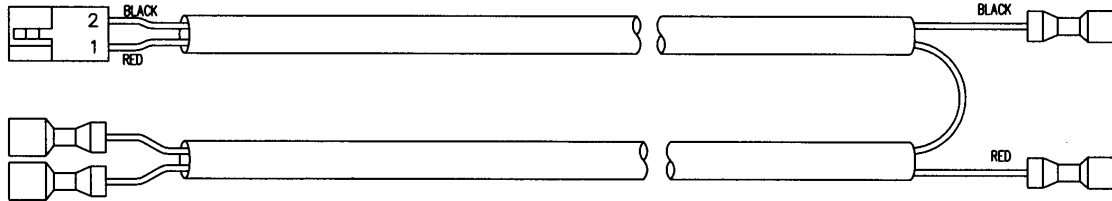




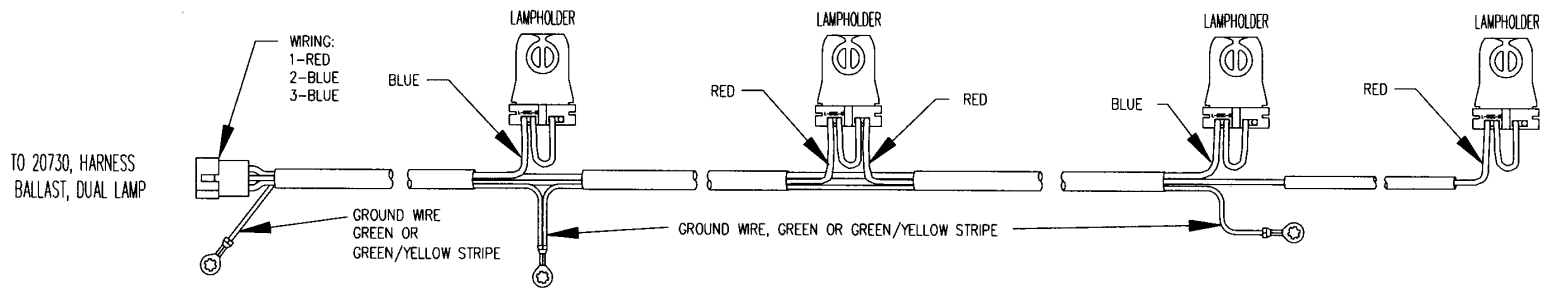


20648 JUMPER WIRE, 18 AWG X 3', FEMALE / FEMALE

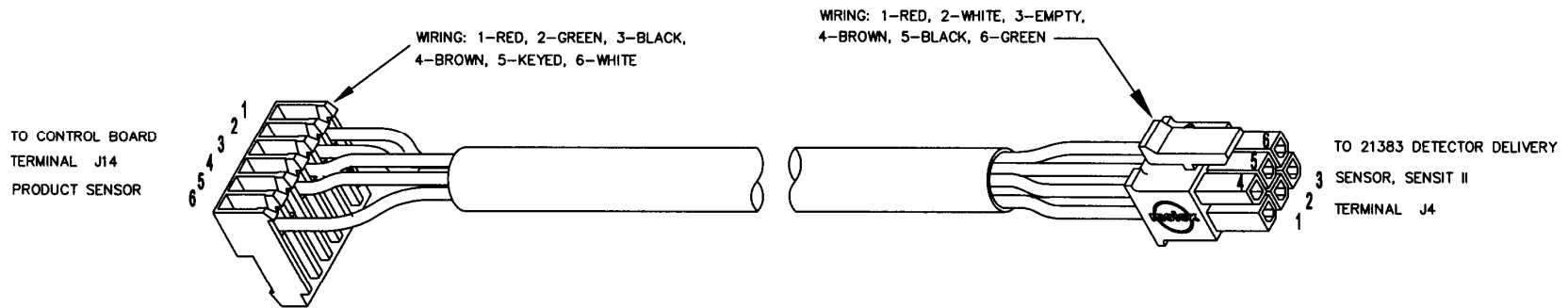
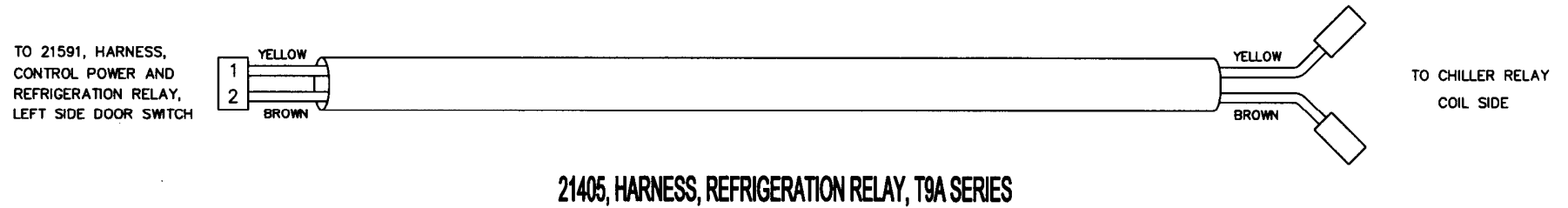
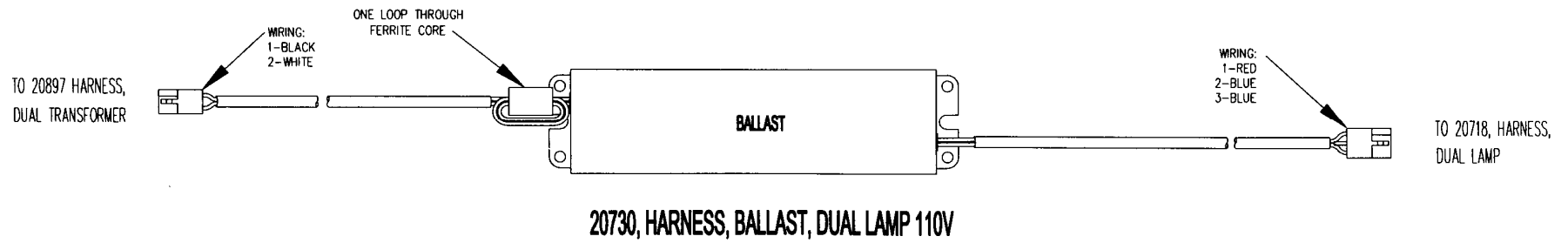
TO 21591 HARNESS, POWER AND REFRIGERATION RELAY, LEFT SIDE DOOR SWITCH

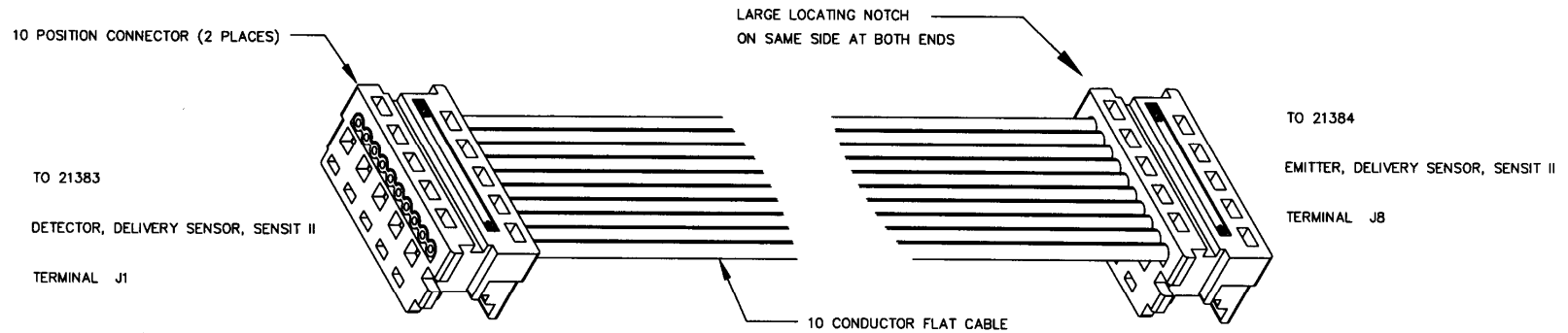


20701, HARNESS, TRANSFORMER AND FUSE

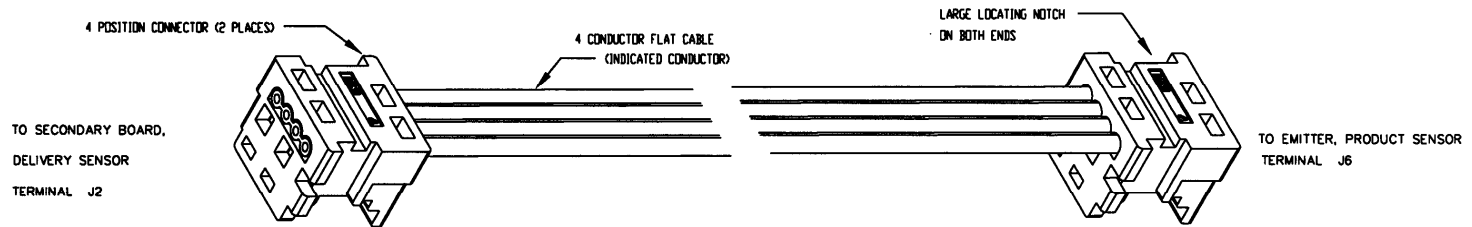


20718, HARNESS, DUAL LAMP 110V

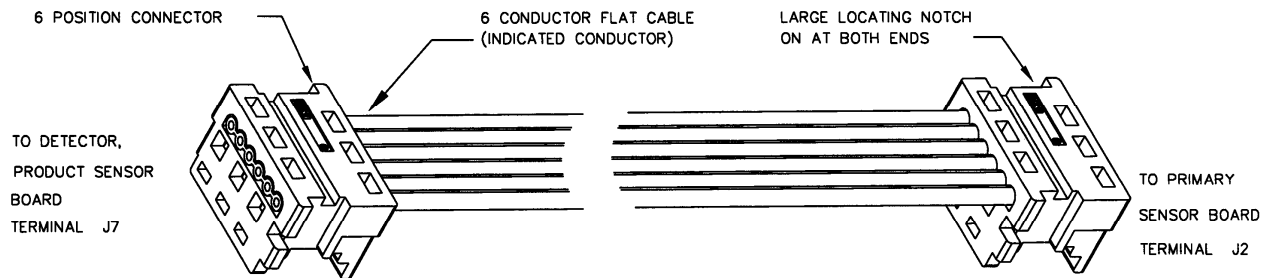




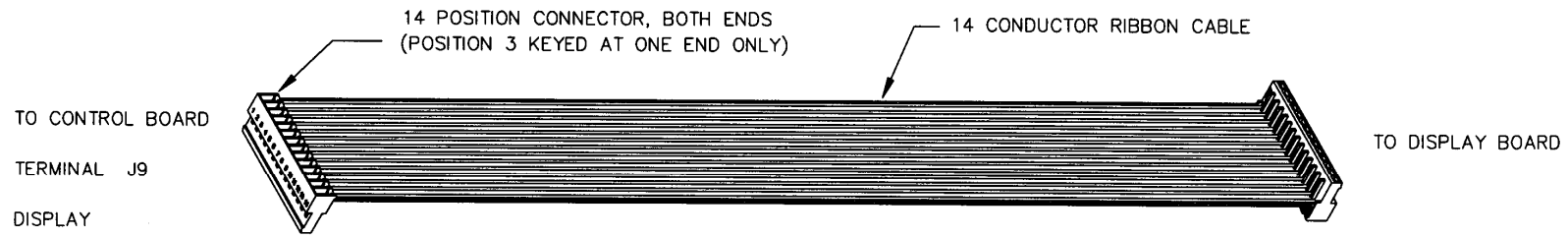
21426 HARNESS, DELIVERY SENSOR DETECTOR/EMITTER, SENSIT II



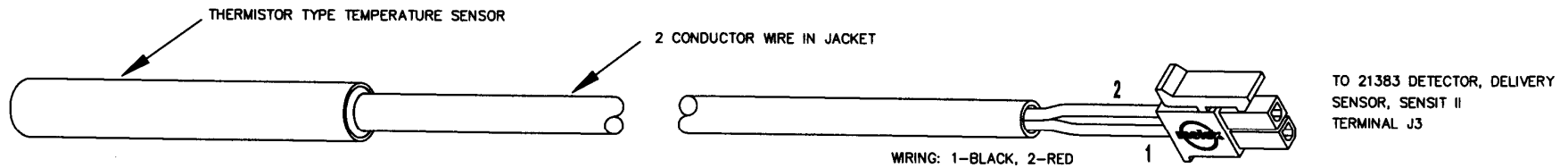
21427 HARNESS, PRODUCT SENSOR EMITTER, (OPTIONAL)



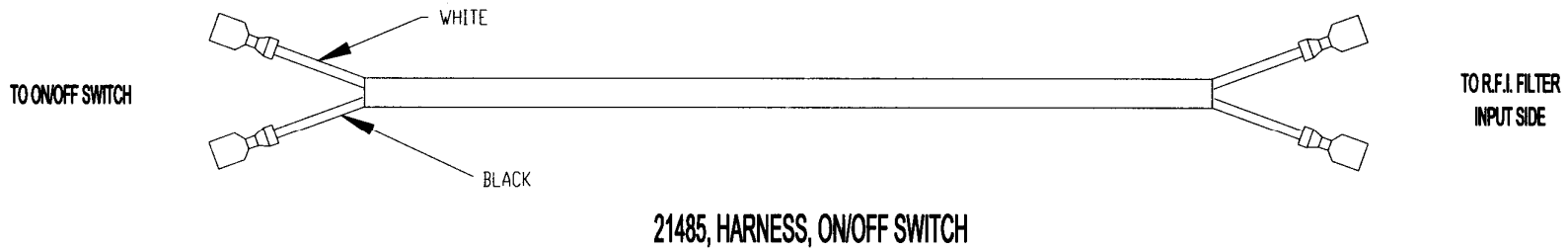
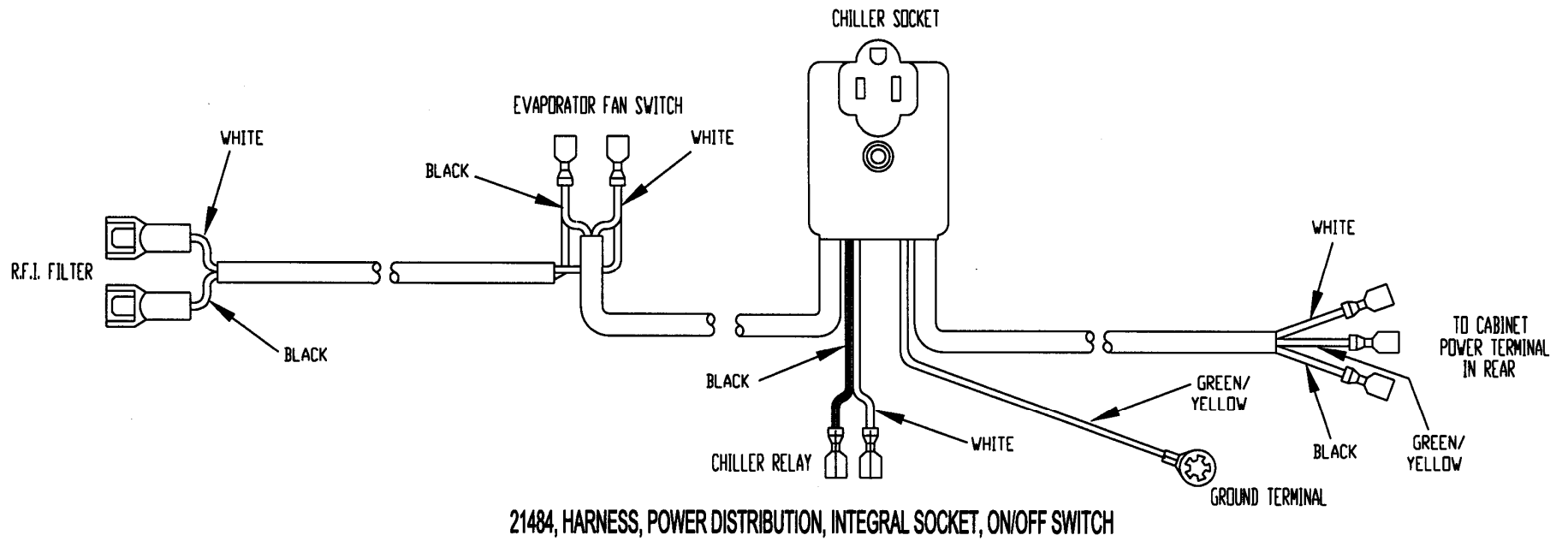
21428, HARNESS, PRODUCT SENSOR DETECTOR (OPTIONAL)

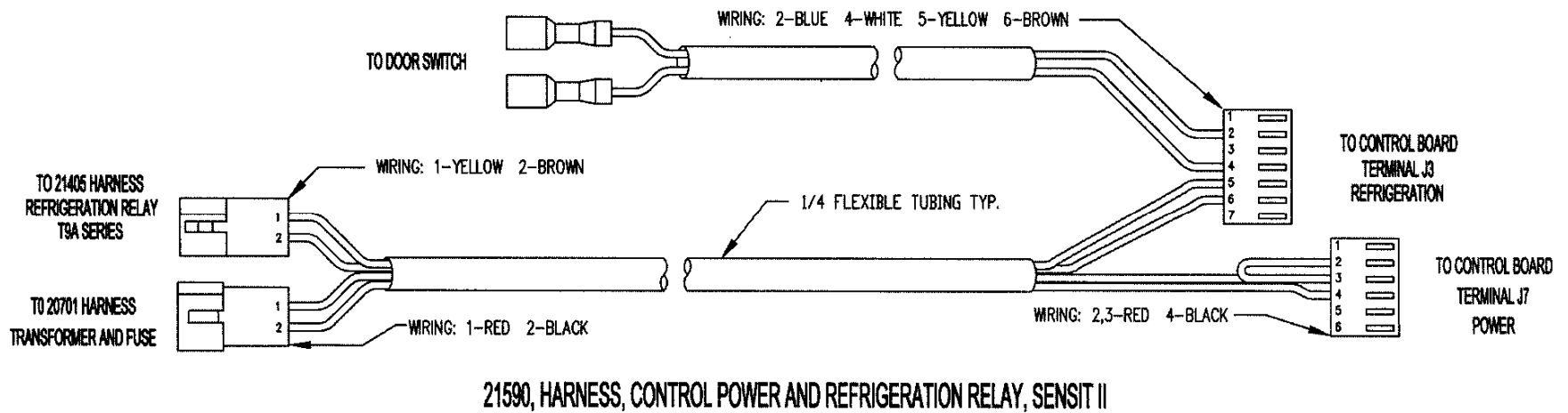
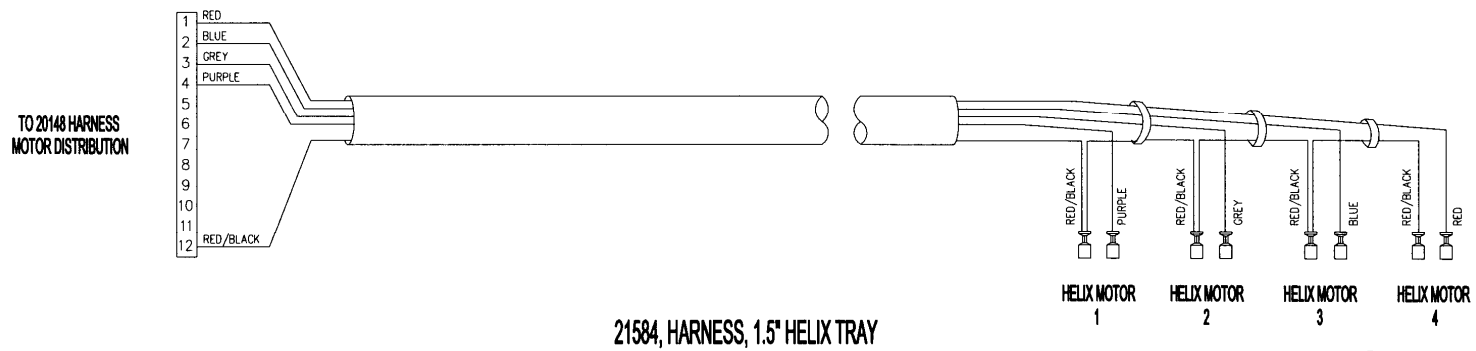


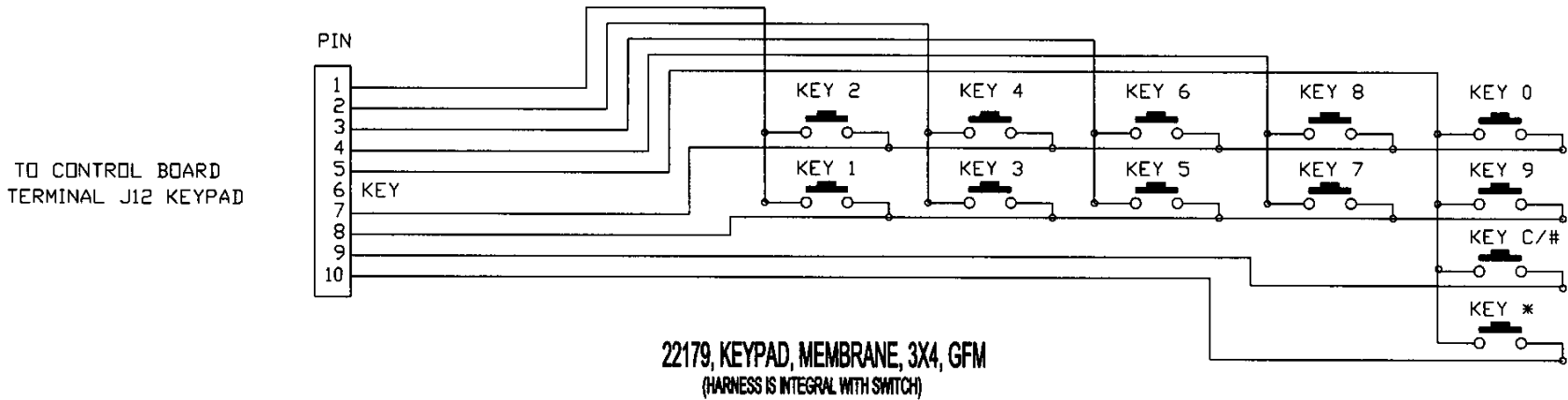
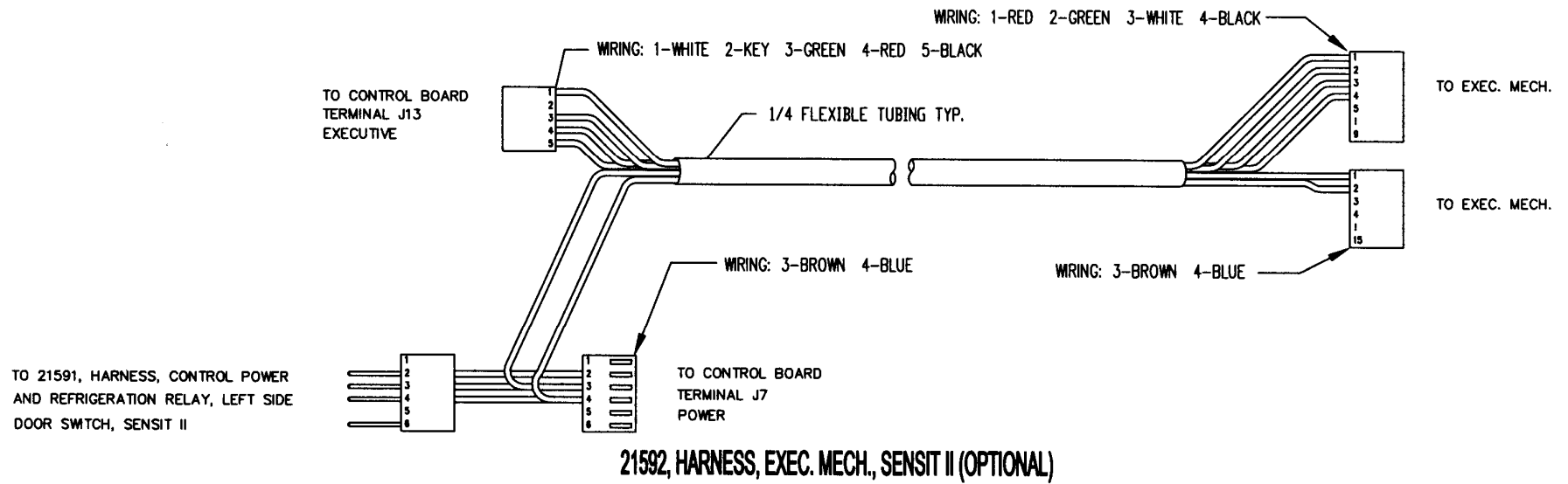
21432 HARNESS, DISPLAY, SENSIT II

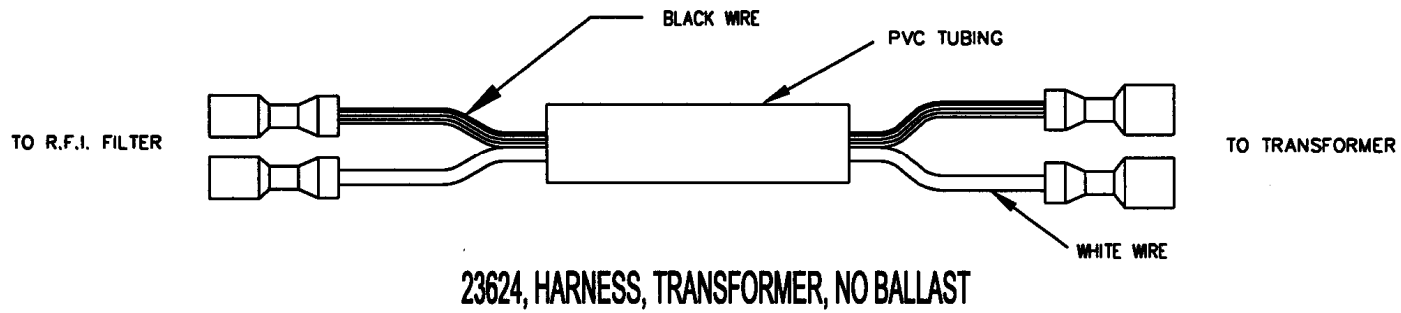
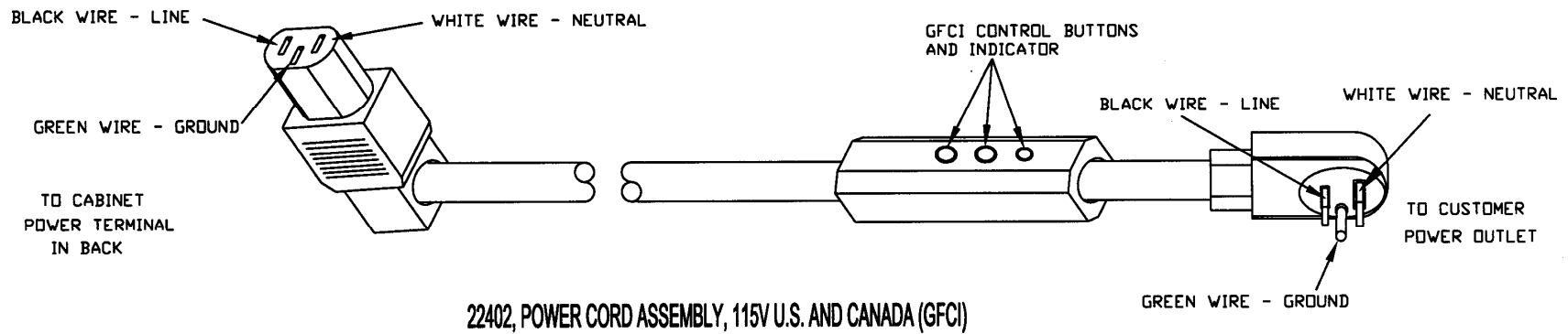


21468 TEMPERATURE SENSOR, SENSIT II







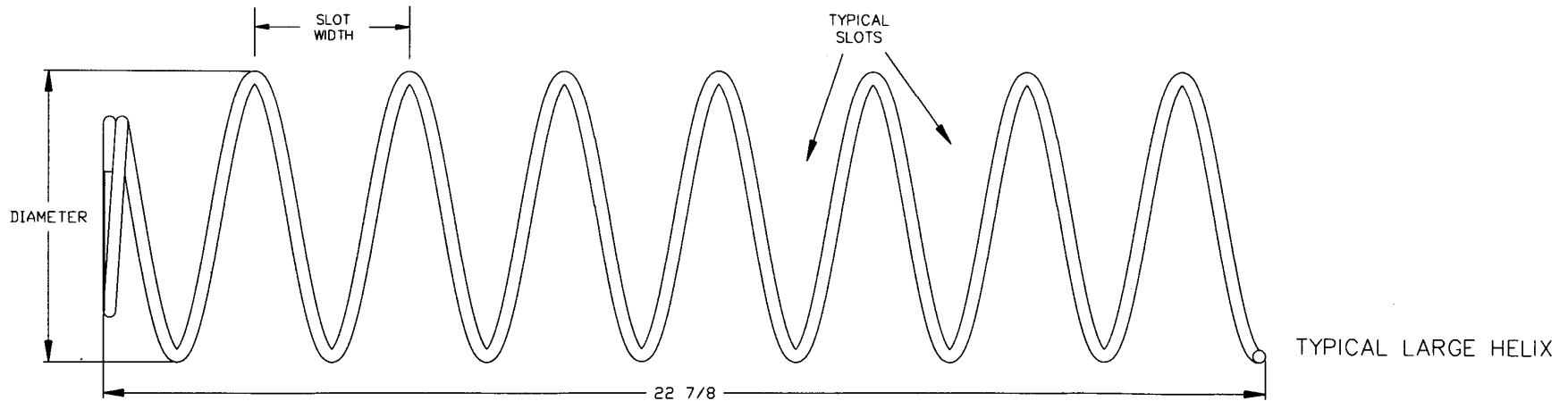
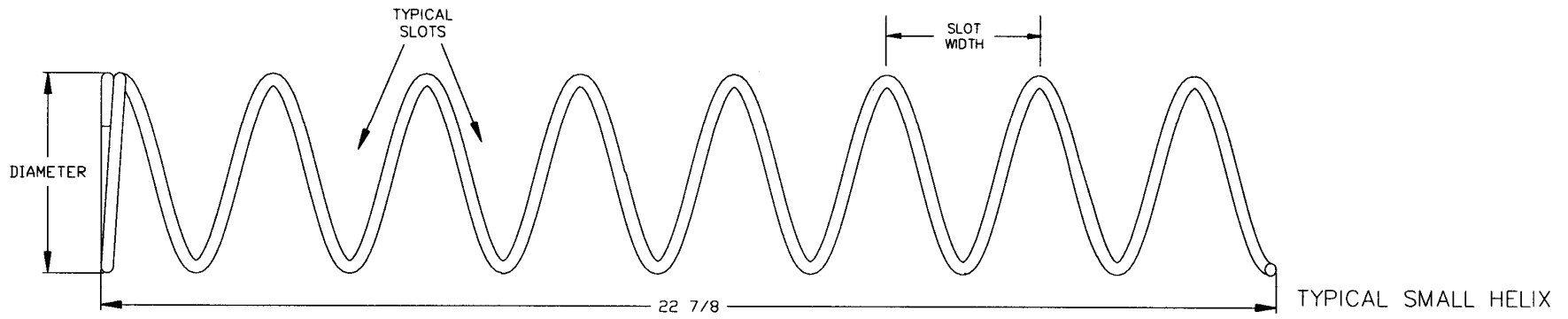
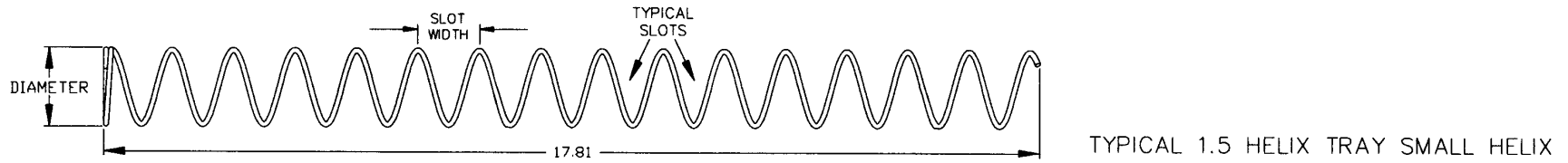


ELECTRICAL HARNESS PARTS LIST			
PART NO.	PART DESCRIPTION	QTY	NOTES
3173	Power Cord, Australia	1	
3193	Power Cord, Continental Europe	1	
3194	Power Cord, U.K. and Ireland	1	
3208	Power Cord, India and South Africa		
20142	Power Cord Assembly, 115V Domestic		Use for Mexico
20144	Harness, Refrigeration	1	For Chiller Power
20146	Harness, Door Motors	1	
20147	Harness, Tray, 10 Column	1	Use For 5 Column Tray
20148	Harness, Motor Distribution	1	
20149	Harness, Ballast/Transformer Line	1	
20154	Harness, R.F.I. Filter Ground	1	
20156-01	Harness, Ground	1	
20158	Harness, Multi-Drop Bus	1	Use for both SII and S3
20162	Harness, Lamp 220V 50Hz	1	Use for Israel and South Africa
20288	Harness, Ballast Assembly, 220V, 50Hz		Single Lamp Option, 220V
20563	Harness, Ballast, Assembly 2	1	Single Lamp Option, 110V
20564	Harness, Lamp 2		Single Lamp Option, 110V
20569	Harness, Lamp, Double Insulated 4-Wire (39")	1	Australia 240V Single
20581	Harness, Lamp European (39")	1	For Single Lamp 220V
20583	Harness, Ballast, European	1	For Single Lamp 220V, (See Ballast, P/N 3158).
20584	Harness, 4-Wire Ballast to Lamp	1	Australia 240V Single
20585	Harness, Ballast Power	1	Australia 240V Single
20648	Jumper Wire	2	Australia 240V Single
20701	Harness, Transformer and Fuse	1	
20718	Harness, Dual Lamp, 110VAC	1	Dual Lamp Option
20730	Harness, Ballast, Dual Lamp, 110VAC	1	Dual Lamp Option, Attaches to Bracket
21405	Harness, Refrigeration Relay T9A	1	
21425	Harness, Delivery Sensor Detector/Control, Sensit II	1	Primary to Control Board
21426	Harness, Delivery Sensor Detector/Emitter, Sensit II	1	Secondary to Primary Board
21427	Harness, Product Sensor Emitter, Sensit II (Optional)	1	Secondary to Emitter Board
21428	Harness, Product Sensor Detector, Sensit II (Optional)	1	Primary to Detector Board
21432	Harness, Display, Sensit II	1	
21468	Temperature Sensor, and Harness, Sensit II	1	Integral to Sensor, for Chiller
21484	Harness, Power Distribution, Integral Socket	1	

21485	Harness, On/Off Switch	1	
21584	Harness, 1.5" Helix Tray	1	
21590	Harness, Control Power & Refrigeration Relay, Sensit II	1	
21592	Harness, Executive Mech Connector, Sensit II	1	
22179	Keypad Membrane, 3X4, GFM	1	Harness is Integral With Keypad
22402	Power Cord Assembly, 115, US and Canada	1	With GFCI, Use in U.S. and Canada
23624	Harness, Transformer, No Ballast	1	Use with LED Lighting

Note: Some assemblies are fabricated with the harness as a unit. These are replaceable only as a unit.
Some harness assemblies listed above are for options which may not have been contracted for and installed by AMS.

HELIX ILLUSTRATIONS

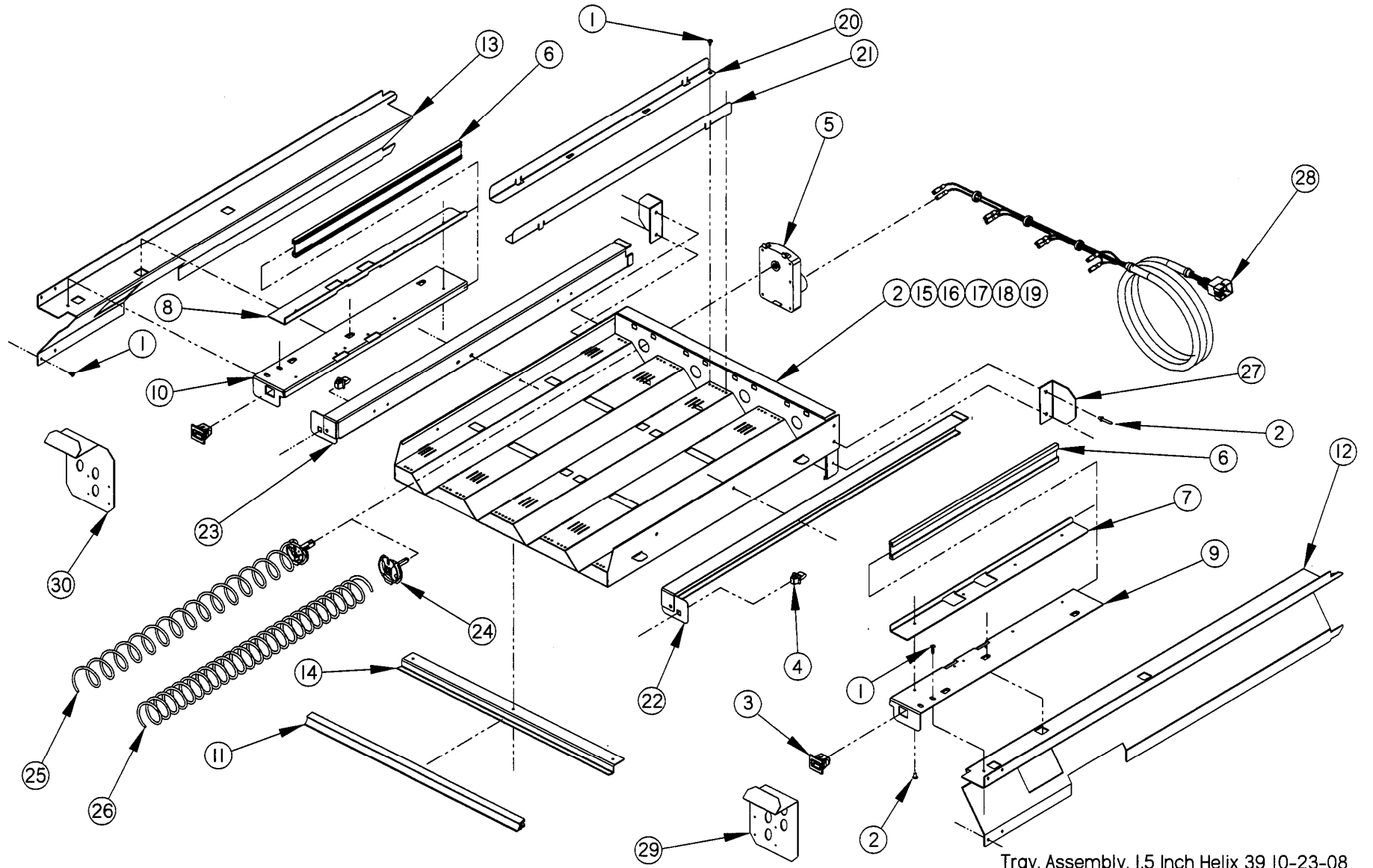


HELIX PARTS LIST

PART NO.	HELIX DESCRIPTION *	SLOT (VEND) WIDTH	NUMBER OF SLOTS (PITCH)	HELIX OUTSIDE DIAMETER	TURNS	QTY PER COLUMN	NOTE
20119-07	Helix, Small CW, Black	2 5/8	7	2.6	CW	1 Set	Use With 20120-07 As A Set
20120-07	Helix, Small CCW, Black	2 5/8	7	2.6	CCW	1 Set	
20119-10	Helix, Small CW, Black	1 7/8	10	2.6	CW	1 Set	Use With 20120-10 As A Set
20120-10	Helix, Small CCW, Black	1 7/8	10	2.6	CCW	1 Set	
20120-12	Helix, Small CCW, Black	1 7/8	12	2.6	CCW	1	
20120-15	Helix, Small CCW, Black	1 7/8	15	2.6	CCW	1	
20120-18	Helix, Small CCW, Black	1 7/8	18	2.6	CCW	1	
20120-24	Helix, Small CCW, Black	1 7/8	24	2.6	CCW	1	
21207-15	Helix, 1.5", CCW, Black	1	15	1.5	CCW	1	Use in 1.5" Helix Tray
21207-25	Helix, 1.5", CCW, Black	9/16	25	1.5	CCW	1	Use in 1.5" Helix Tray
21336	Helix, 3", CCW, Black	3.5	6	3	CCW	1	Bottle Tray
21337	Helix, 3", CCW, Black	3.2	6	3	CCW	1	Bottle Tray
21465-5	Helix, 3.75" CCW, Black	3 1/4	5	3.75	CCW	1	Large Diameter
21465-7	Helix, 3.75" CCW, Black	2 5/8	7	3.75	CCW	1	Large Diameter
21465-9	Helix, 3.75" CCW, Black	2	9	3.75	CCW	1	Large Diameter
21465-10	Helix, 3.75" CCW, Black	1 3/4	10	3.75	CCW	1	Large Diameter
21465-12	Helix, 3.75" CCW, Black	1 1/2	12	3.75	CCW	1	Large Diameter
21465-15	Helix, 3.75" CCW, Black	1 1/4	15	3.75	CCW	1	Large Diameter

Contact your distributor for special helix diameters and pitch.

1.5" HELIX TRAY ILLUSTRATION

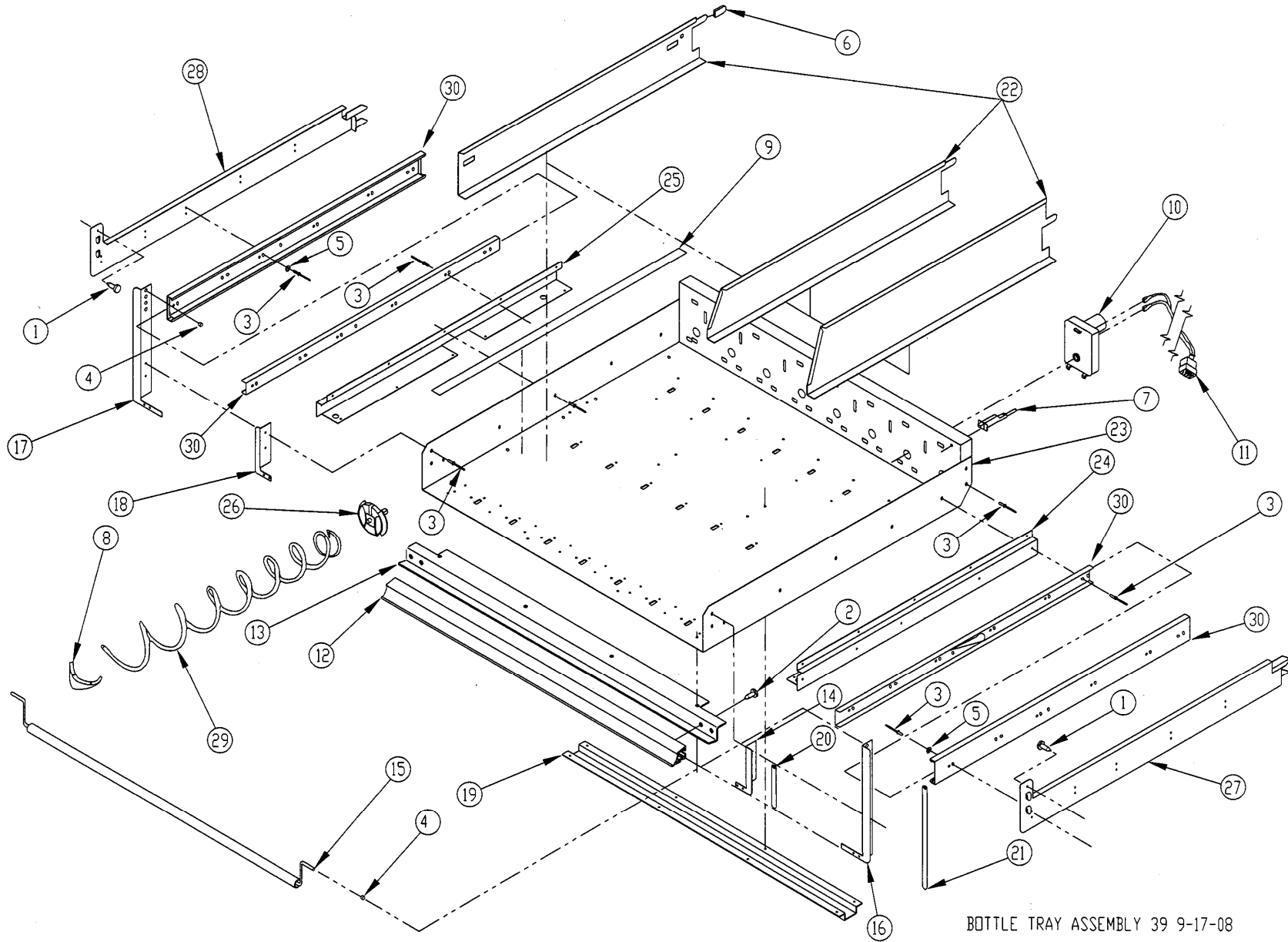


Tray, Assembly, 1.5 Inch Helix 39 10-23-08

1.5" HELIX TRAY ASSEMBLY PARTS LIST

ITEM NO	PART NO.	PART NAME	QTY	NOTES
1	3000	Screw, TEK 8-18	18	
2	3009-02	Rivet, Pop, Steel, 1/8	34	
3	3246	Latch, Nylon, Gum and Mint	2	
4	3247	Strike, Nylon, Gum and Mint	2	
5	20086	Motor, Single Helix W/O Switch	4	
6	20236	Extrusion, Gum and Mint Rail	2	
7	20237	Extrusion Mount, Upper (Gum and Mint)(Right Side)	1	
8	20237-01	Extrusion Mount, Upper (Gum and Mint)(Left Side)	1	
9	20238	Extrusion Mount, Lower (Gum and Mint)(Right Side)	1	
10	20238-01	Extrusion Mount, Lower (Gum and Mint)(Left Side)	1	
11	20465-04	Extrusion, Price Marker, Reduced Height	1	
12	20973	Rail, Gum and Mint, Reduced Depth (39")(Right Side)	1	Rails To Fit Tray To 39" Cabinet
13	20973-01	Rail, Gum and Mint, Reduced Depth (39")(Left Side)	1	
14	21196	Doubler, Tray 1.5" Helix Tray	1	Parts Are Factory Assembled As A Unit
15	21197	Tray Body, 1.5" Helix Tray	1	
16	21199	Tray Back, 1.5" Helix Tray	1	
17	21200	Tray Inner Side, 1.5" Helix Tray	2	
18	21201	Tray Inner Section, 1.5" Helix Tray	2	
19	21202	Tray Inner Mid Section, 1.5" Helix Tray	1	
20	21203	Divider, Tray, 1.5" Helix Tray, RH	4	
21	21203-01	Divider, Tray, 1.5" Helix Tray, LH	4	
22	21204	Tray Slide Channel, 1.5" Helix Tray, RH	1	Tray is Equipped With Two Of Each
23	21204-01	Tray Slide Channel, 1.5" Helix Tray, LH	1	
24	21206	Helix Adapter, 1.5" Helix Tray	4	
25	21207-15	Helix, 1.5" Tray, Counterclockwise, Black	2	Tray is Equipped With Two Of Each
26	21207-25	Helix, 1.5" Tray, Counterclockwise, Black	2	
27	21523	Bracket, Stop, 1.5" Helix Tray	2	
28	21584	Harness, 1.5" Helix Tray	1	
29	22387	Deflector Plate, 1.5" Helix Tray, 1-1/2 CF. Hopper (39")	1	RH, Mount On Hopper For 1.5 Tray Only
30	22387-01	Deflector Plate, 1.5" Helix Tray, 1-1/2 CF. Hopper (39")	1	LH, Mount On Hopper For 1.5 Tray Only

BOTTLE TRAY ILLUSTRATION



BOTTLE TRAY ASSEMBLY 39 9-17-08

BOTTLE TRAY PARTS LIST

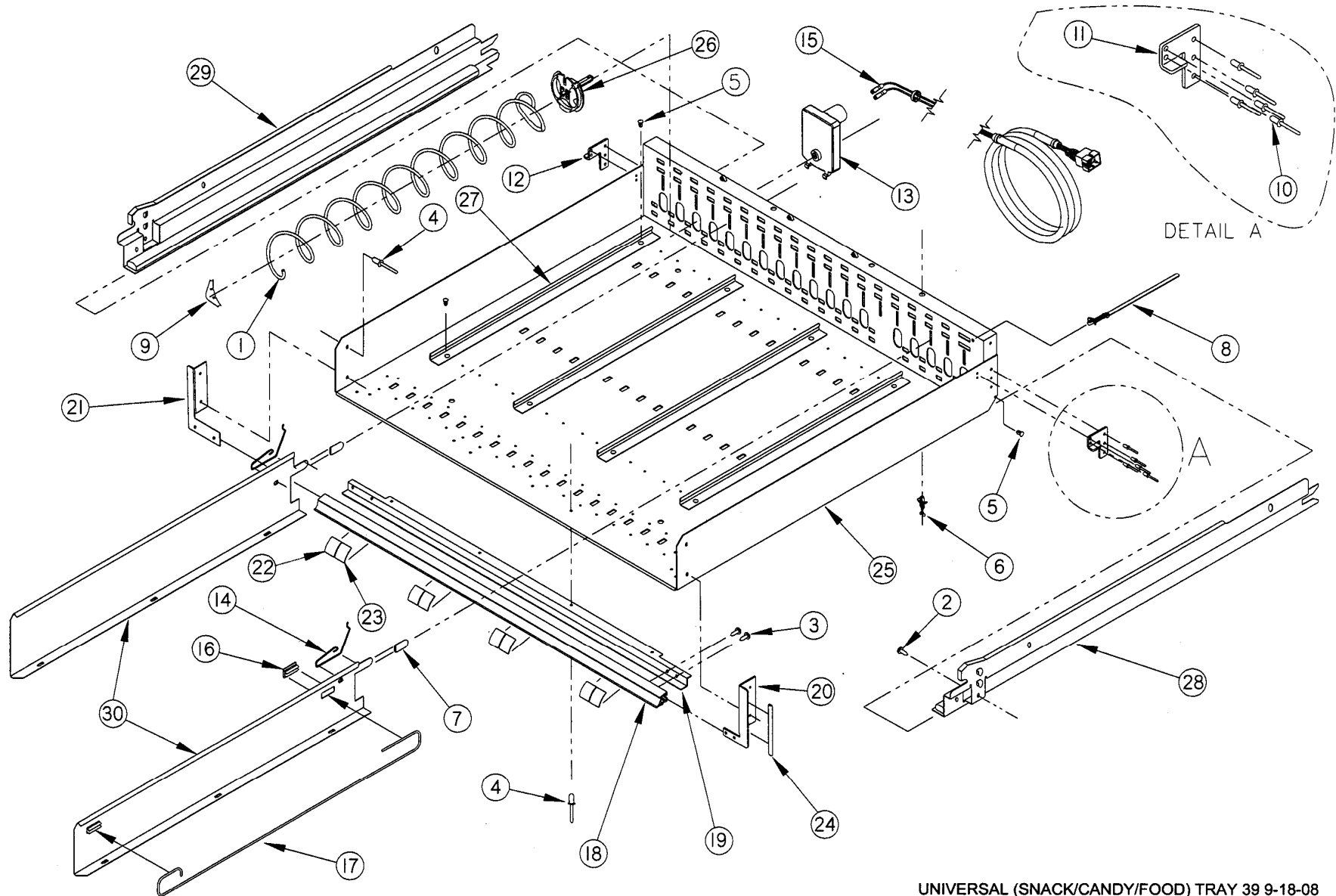
ITEM	PART NO.	PART DESCRIPTION	QTY.	NOTE
1	3000	Screw, Sheet Metal, Type 8-8	2	Safety Screws for Rails
2	3001-03	Screw, Sheet Metal, Type B, 8-18	4	
3	3009-02	Rivet, Pop, Steel, 1/8	65	
4	3015	Bearing, Nyliner, Snap-In	2	Use On 20691/20724 for Bottle Tipper
5	3017-05	Washer, Flat Steel	10	For Rivet Reinforcement
6	3021	Protective Cap, Vinyl	7	
7	3042-01	Wire Tie, Panel Mount	1	
8	3111	Helix Ejector, Small Helix	8	
9	3189-01	Tape, UHMW Polyethylene, 3/4" X .005"	16'	
10	20086	Motor, Single Helix W/O Switch	8	For SII Usage Only
	23007	Motor, With Home Circuit, S3		For S3 Usage Only
11	20163	Harness, Tray, 8 Column	1	
12	20465-03	Extrusion, Price Marker, Ver. 2	1	
13	20644	Tray Doubler, Bottle (39')	1	
14	20672	Tray Corner, Bottle, Right	1	Use With 20690 Without Bottle Tipper
15	20690	Assembly, Bottle Tipper Bar	1	
16	20691	Tray Corner, Bottle Tipper Bar, Right	1	Use With 20690 For Bottle Tipper
17	20724	Tray Corner, Bottle Tipper Bar, Left	1	Use With 20690 For Bottle Tipper
18	20725	Tray Corner, Bottle, Left	1	Use With 20690 Without Bottle Tipper
19	20775	Tray Reinforcement, Bottle (39') Ver. 2	1	
20	20796-01	Edge Guard, Tray Corner (Only RH)	1	Use On 20672 Without Bottle Tipper
21	20796-02	Edge Guard, Tray Corner (Only RH)	1	Use On 20691 For Bottle Tipper
22	21276	Tray Divider, Reduced Depth, Tapered Front	7	3.3" High
	21374	Tray Divider, Reduced Depth, Tapered Front, High		4.9" High
	23333	Tray Divider, VER 2, 3-3/8"		3-3/8" High
23	20960	Tray Body, Bottle, Reduced Depth (39')	1	
24	20962	Bracket, Bottle Tray Rail, Reduced Depth (RH)	1	
25	20962-01	Bracket, Bottle Tray Rail, Reduced Depth (LH)	1	
26	20966	Helix Adapter, Without Hub	8	
27	20980	Rail, Bottle Tray, Reduced Depth (RH)	1	Use Lower Rivet Positions For Tall Bottles

28	20980-01	Rail, Bottle Tray, Reduced Depth (LH)	1	Use Lower Rivet Positions For Tall Bottles
29	21336	Helix, 3' Counter-Clockwise, 3.5' Opening, Black	8	See Helix Description For Options.
30	21475-02	Rail Slide, Full Extension, 24"	1	1 Pair (2 Inside Parts and 2 Outside Parts)

NOTE: 20692, Device, Bottle Alignment (BAD), are no longer supplied.

THIS PAGE INTENTIONALLY LEFT BLANK

UNIVERSAL (SNACK/CANDY/FOOD) TRAY ILLUSTRATION



UNIVERSAL (SNACK/CANDY/FOOD) TRAY PARTS LIST

ITEM NO	PART NO.	PART NAME	QTY*	NOTE
1	1	Helix	1	1 Per Column - See Helix Section.
2	3000	Screw, Sheet Metal, 8-18	2	Safety Screws for Rails
3	3001-03	Screw, Sheet Metal, Type B, #8-18 (3/8" Long)	4	
4	3009-02	Rivet, Pop, Steel, 1/8 (1/8" Grip)	12	
5	3019	Canoe Clip	2	Plus 2 Per Helix Alignment Device
6	3020	Wire Tie, Standoff	3	
7	3021	Divider Cap	1	Per Divider
8	3042-01	Wire Tie, Panel Mount	1	
9	3111	Helix Ejector	1	
10	3295-03	Rivet, Steel, 1/8", Plated	10	Use for Tab Stop
11	20073	Tray Stop (Rh)	1	
12	20073-01	Tray Stop (Lh)	1	
13	20086	Motor, Single Helix W/O Switch	1	Per Column - Use 20086 for SII Only, Use 23007 For S3 Only
	23007	Motor, With Home Circuit, S3		
14	20133	Tray Divider Spring	1	Per Divider
15	20147	Harness, Tray, 10 Column	1	
16	20220	Extrusion, Candy Pusher	2	Per Divider With Cut-outs
17	20221	Bar, Candy Pusher	1	Per Divider With Cut-outs
18	20465-02	Extrusion, Price Marker, Reduced Height	1	
19	20544	Tray Doubler, VER 2 (39")	1	
20	20545	Tray Corner, Ver. 2 (Rh)	1	
21	20545-01	Tray Corner, Ver. 2 (Lh)	1	
22	20613	Label Sheet, Reduced Height Location	1	
23	20614	Label Sheet, Reduced Height Price	1	
24	20796-01	Edge Trim, Tray Corner	1	Right Hand Corner Only
25	20955	Tray Body, Reduced Depth (39")	1	
26	20966	Helix Adapter, Without Hub	1	
27	22192	Helix Alignment Device, PVC	1	
28	22250	Assembly, Rail, Snack, Right	1	
29	22251	Assembly, Rail, Snack, Left	1	
30	23333	Tray Divider, VER 2, 3-3/8" High	1	Select Type, Numbers To Form Columns
	23334	Tray Divider, VER 2, 4-7/8"		Select Type, Numbers To Form Columns

* Multiply the quantities given above to form each column on the tray.

